

Report: 1.ODR-07/12-R&D

Revised 02, January 22, 2008

2008

Research and Development Support Analysis



Ministry of Textile Industry

Research, Development and Advisory Cell

H.627, Street 95, I-8/4 Islamabad

PAKISTAN

Ph: +92 51 9259179

Fax: +92 51 9257321

Email: info@rdacell.com

Website: <http://www.rdacell.com>

Disclaimer

All data represented in this study is provided by Federal Bureau of Statistics except few for which the sources are mentioned.

MINTEX is not responsible for the correctness of the data source. The representation of the data is solemnly for analysis purpose. It is not intended to provide any focused derivations favoring or disfavoring particular individual or group.

This Data, Research and Analysis are the intellectual property of Research, Development and Advisory Cell of MINTEX. The usage of such data and analysis in other reports would require prior permission from the Ministry at the following contact information;

Secretary
Ministry of Textile Industry
2nd Floor, FBC Building
G-5/2, Islamabad
PAKISTAN
Email: contact@textile.gov.pk
Phone: +92 51 9203346
Fax: +92 51 9203345

ISLAMABAD
22/01/08

Contents

1	About R&D Support.....	1
2	Total Disbursements under R&D Support.....	4
3	Effect of R&D Support on Export Performance.....	5
4	Effect of R&D Support on Knitted Garment Exports.....	7
4.1	Overall Knitwear Exports.....	7
4.2	Exports to R&D and Non-R&D Supported Countries	8
4.3	Effect on Average Unit Price	9
4.4	Regional Diversification of Knitwear Exports.....	12
4.5	Conclusion	15
5	Effect of R&D Support on Woven Garments.....	16
5.1	Overall Woven Garments Exports.....	16
5.2	Exports to R&D and Non-R&D Supported Countries	17
5.3	Effect on Average Unit Price	19
5.4	Regional Diversification of Woven Garments Exports	22
5.5	Conclusion	24
6	Effect of R&D Support on Made-ups Exports.....	25
6.1	Overall Made-ups Exports.....	25
6.2	Exports to R&D and Non-R&D Supported Countries	26
6.3	Effect on Average Unit Price	27
6.4	Regional Diversification.....	30
6.5	Conclusion	30
7	Summary	31
	Annex-I: List of Textile Product HS-Codes Covered in R&D Support.....	I
	Annex-II: Region-wise Countries Covered in R&D Support.....	II
	Annex-III: 6 Digit HS-Code Products under Chapter 61 for Knitwear.....	III
	Annex-IV: 6 Digit HS-Code Products under Chapter 62 for Woven Garments.....	VI
	Annex-V: 3% and 5% R&D Supported Products	X

1 About R&D Support

Research and Development support (R&D Support) is given to the Textile Industry to make it competitive and to boost its exports in value added sectors. The major objectives include enhancing operations through product development, innovation, human resource development and technological up-gradation.

The level of the R&D support was based on a rational estimation of each sub-sector's need for investment in the above areas for acquiring higher levels of value addition. With these objectives and rationale in view, the R&D Support was fixed as a percentage of export earnings for the following product categories.

Table 1: Product Category and %age of FOB Value of Export

Product Category	Disbursement Formula
Woven Garments	6% of FOB value of Exports
Knitted Garments	6% of FOB value of Exports
Dyed &Printed Home Textiles	5% of FOB value of Exports
Dyed & Printed Fabric	3% of FOB value of Exports
White Home Textiles	3% of FOB value of Exports

List of HS Codes under R&D Support are given in Annex-I.

The R&D Support also aimed at diversification of export destinations to give sustainable share in relatively non-traditional markets. The list of countries has been extended over time to make the support more meaningful.

The following table depicts the present operation of the scheme.

Table 2: Countries included in R&D Support

Category on the base of %age on FOB Value	Countries for which R&D support is available
6% Category	EU Countries, United States, Canada, Australia, Japan, Switzerland.
5% Category	United States, EU Countries, Canada, Australia, Japan, New Zealand, Switzerland, Malaysia, Indonesia, China, South America, Mexico, South Africa, Russian Federation, Uzbekistan, Turkmenistan, Kirghizstan, Kazakhstan, Tajikistan, Azerbaijan, Ukraine, Belarus, Georgia, Armenia, Moldavia, Norway, Singapore, Bangladesh, Egypt, India, Jordan, Lebanon, Papua New Guinea, Srilanka, Turkey, Cambodia, and Vietnam
3% Category	Same as 5% Category

Details of Region-wise breakup of countries are given in Annex-II.

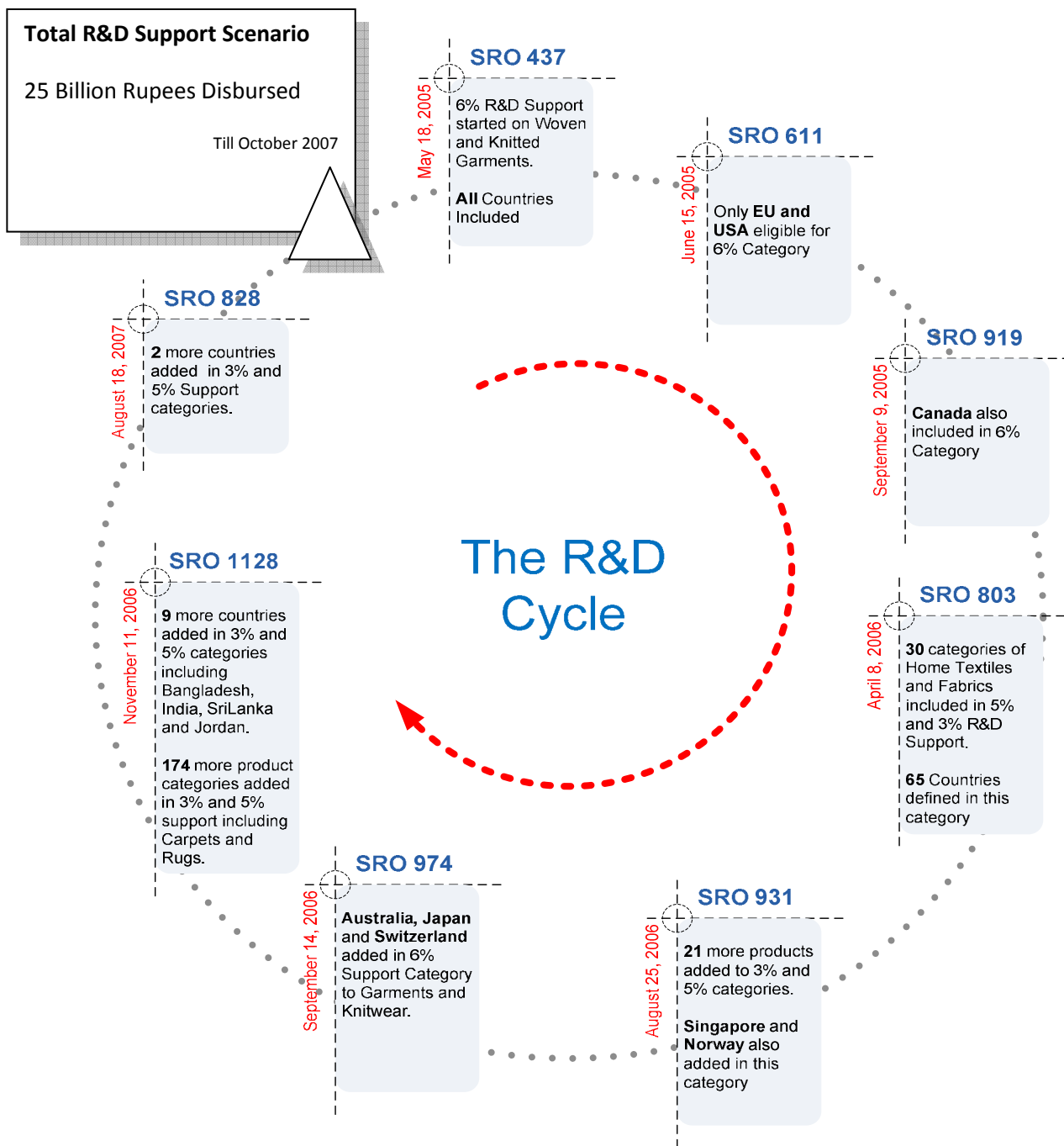


Figure 1: The R&D Cycle

2 Total Disbursements under R&D Support

Following is the total Disbursements under R&D Support as quoted by State Bank of Pakistan (Figures in Million Rs.);

Table 3: R&D Disbursement. Source SBP

	FY 2005-06	FY 2006-07	FY 2007-08*	Total*
Garments (Knitwear and Woven) – 6% Category	5,753.89	9,304.99	2,860.38	17,919.26
Home Textiles – 3% & 5% Category	-	4,618.04	2,395.64	7,013.69
Total	5,753.89	13,923.03	5,256.02	24,932.95

*up to 31/10/2007

3 Effect of R&D Support on Export Performance

As R&D support facility is directly linked with export performance, this is inevitably affecting export pattern of the textile products vis-à-vis growth, diversification and Average Unit Price. To analyze the situation, this report will be spotting changes in exports of knitwear, woven garments, and made-ups.

To give a slight touch to international overall textile trade scenario following table has been included in the report.

Table 4: Textile and Clothing Exports (Figures in Million US\$). Source: WTO

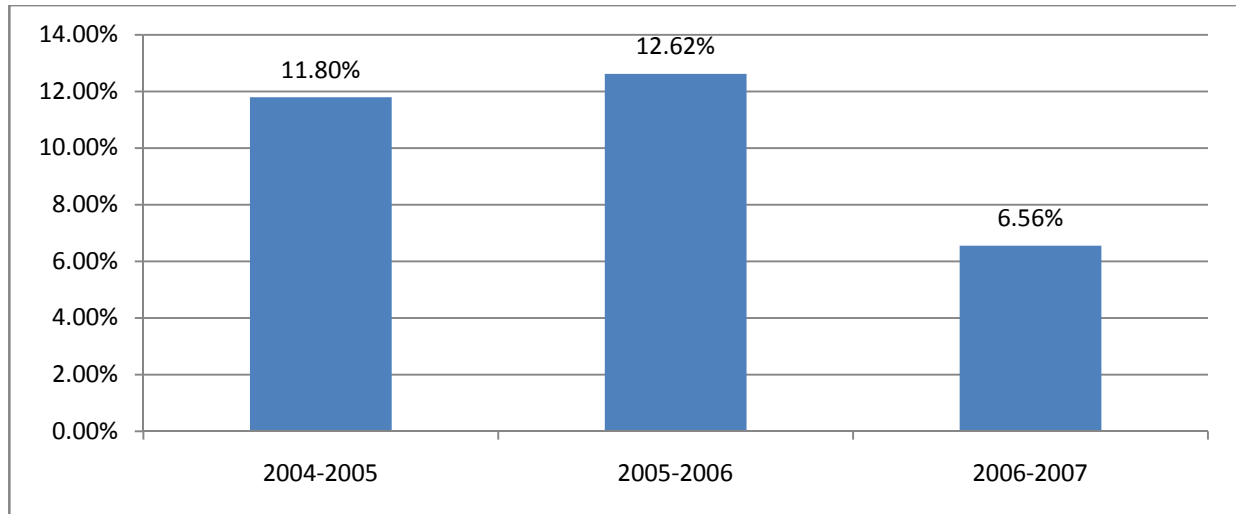
	2002	2003	2004	2005	2006	Total Growth	Rank in 2006
World	362,011	408,699	456,110	483,106	530,004	46.41%	
China	61,864	78,961	95,284	115,213	144,071	132.88%	1
Share in World Exports	17%	19%	21%	24%	27%		
India	12,065	13,471	13,641	17,674	19,522	61.81%	4
Share in World Exports	20%	17%	14%	15%	14%		
Pakistan	7,018	8,521	9,151	10,691	11,376	62.10%	10
Share in World Exports	1.94%	2.08%	2.01%	2.21%	2.15%		
Bangladesh	4,580	5,480	6,893	8,447	9,850	115.07%	13
Share in World Exports	1.27%	1.34%	1.51%	1.75%	1.86%		

According to WTO trade statistics¹ Pakistan has been able to increase its share from 1.94% to 2.15% in textile trade in volumes in last 5 years. This shows that Pakistan has performed better on average than its competitors in textile trade however it is a fact that China and Bangladesh have increased their quantum share in the same time period.

¹ To have similar time periods for comparison, data from WTO has been used.

As far as annual growth is concerned, following graph shows the updated trend of annual increase in Exports of Pakistan;

Graph 1: Annual Increase in Pakistani Exports



In order to study the effect of R&D support on export pattern, the report analyzes 3 year annual trade data for Pakistan for targeted categories and countries. The report includes 3 separate sections for highlighting changes in Knitwear, Woven garments and Made-ups.

4 Effect of R&D Support on Knitted Garment Exports

6% R&D support is being given on the export of Knitted Garments w.e.f. July 2005. All product categories under Chapter 61 of HS-Codes have been included in the scheme². Countries eligible for availing the 6% R&D Support facility are EU Countries, United States, Canada, Australia, Japan, and Switzerland.

4.1 Overall Knitwear Exports

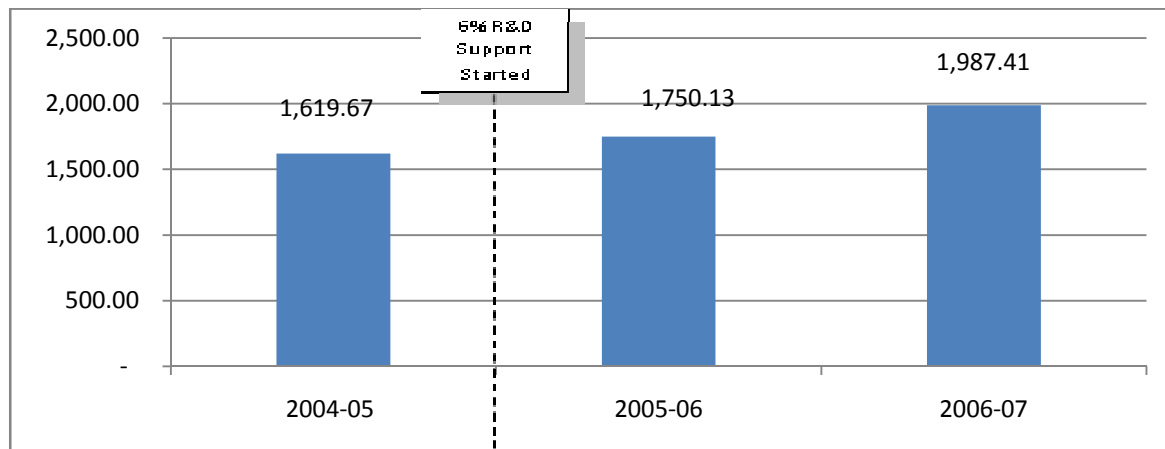
Export of knitted garments rose by 38% in last 3 years however the growth in unit value was only 23% which gives clear indication of declining average unit price.

Table 5: Total Pakistani Knitwear Exports (Quantity in Million Dozens, Value in Million US\$)

	2004-05 Quantity	2004-05 Value	2005-06 Quantity	2005-06 Value	2006-07 Quantity	2006-07 Value	Change in Quantity in Last 3 Years	Change in Value in Last 3 Years
Knitwear Exports	71	1,619	84	1,750	98	1,987	38%	23%

The total value export trend is as follows;

Table 6: Total Export Value Trend (In Million US\$)



² 6 digit level details of products under Chapter 61 which are included in the study is given in Annex-III.

4.2 Exports to R&D and Non-R&D Supported Countries

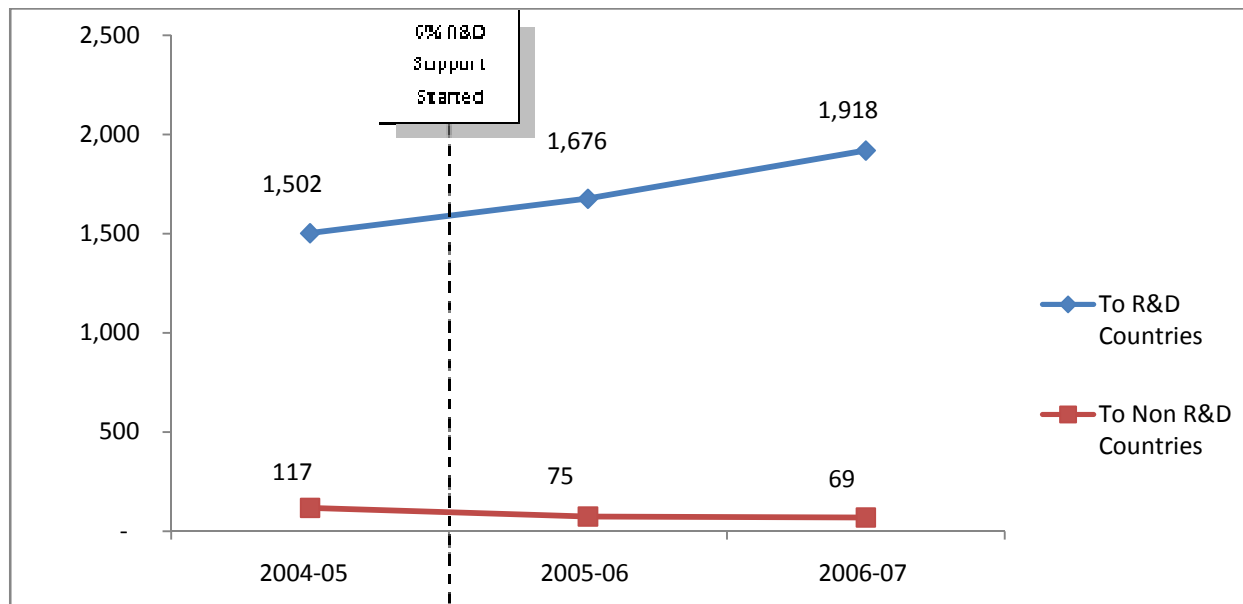
To bifurcate the export performance in R&D supported and Non-R&D supported class, the data was analyzed by trade flows to all countries. As anticipated the data clearly indicates that export growth is higher in R&D supported countries however export is declining in double digit to non-R&D countries.

Table 7: Exports to R&D and Non-R&D Countries (Quantity in Million Dozens, Value in Million US\$)

	2004-05 Quantity	2004-05 Value	2005-06 Quantity	2005-06 Value	2006-07 Quantity	2006-07 Value	Change in Quantity in Last 3 Years	Change in Value in Last 3 Years
To R&D Countries	66	1,502	80	1,675	93.84	1,918	42%	28%
To Non R&D Countries	5	117	4	74	4	69	-12%	-41%
To World	71	1,619	84	1,750	98	1,987	38%	23%

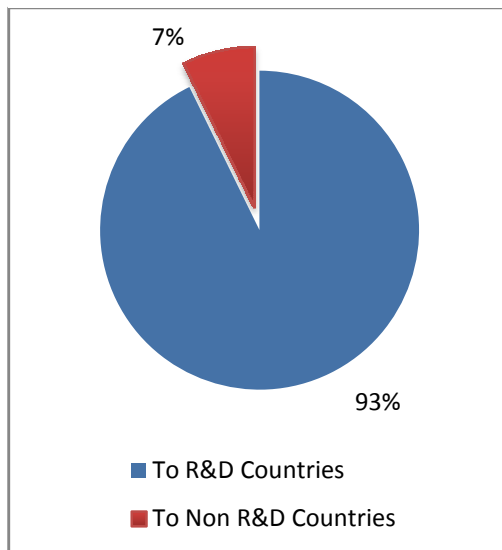
Following is the comparison of exports to R&D and Non-R&D Countries in Knitwear category;

Graph 2: Exports to R&D and Non-R&D Countries (Value in Million US\$)

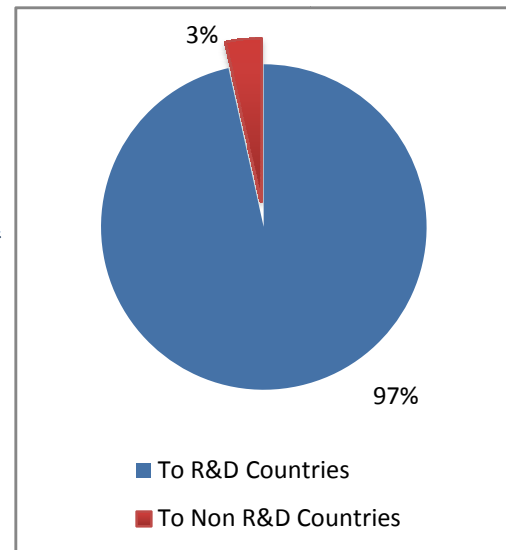


The same data was used to determine trade share amongst R&D and non-R&D countries. After the start of the R&D Support, share of export destination has immensely shifted towards the R&D countries. The share of Non-R&D countries has shrunk from 7% to 3% in only 3 years.

Pie 1: R&D Export Share 2004-05



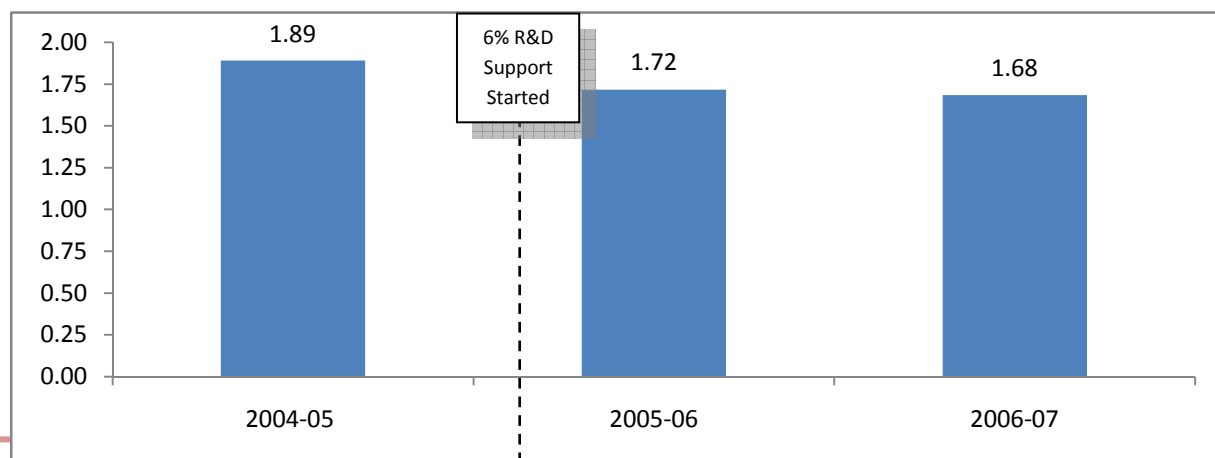
Pie 2: R&D Export Share 2006-07



4.3 Effect on Average Unit Price

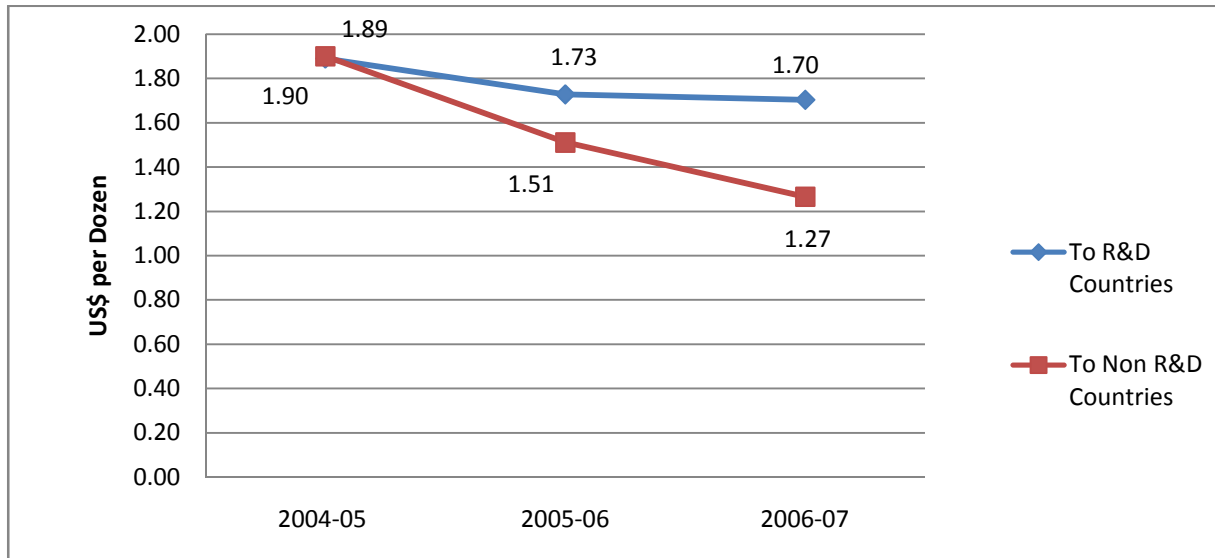
As indicated earlier overall increase in export quantities is far more than the export values which show decline in Average Unit Price (AUP). Following graph shows that AUP have gone down sliding by 8.81% and 2.37% in 2005-06 and 2006-07 respectively. The trend in terms of Average Unit Price is given below;

Graph 3: AUP trend (Value in US\$ per Unit)



The trend of Average Unit Price of Knitwear products in R&D Supported and Non-R&D Supported countries is as follows;

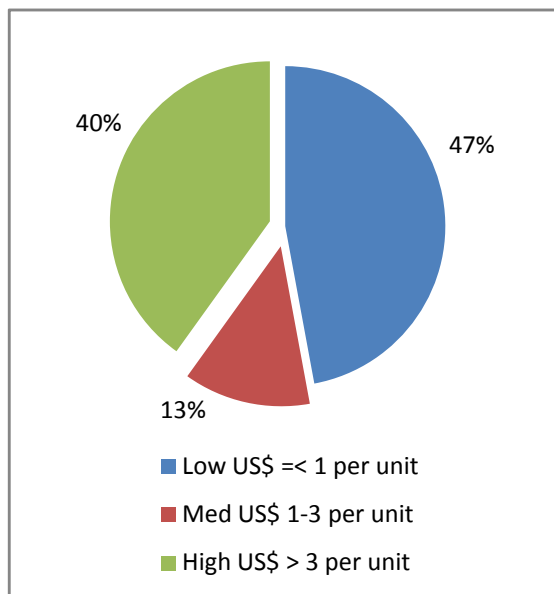
Graph 4: AUP of knitwear to R&D and Non-R&D Countries



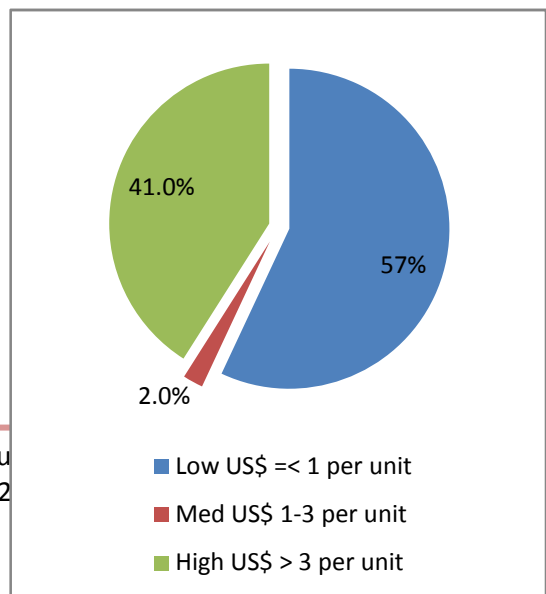
Graph 4 clearly indicates that AUP in non-R&D countries has dropped drastically as compared to R&D supported countries. The rate is -8.55% and -1.45% for supported countries while -20.47% and -16.21% for non-supported countries for 2005-06 and 2006-07 respectively.

The reason for deteriorated average unit prices is shift toward lower value added products. Following graph shows the trend of increase in share of low value added products in total exports.

Pie 3: Share of Products interms of Value in Total Knitwear Exports in 2004-05



Pie 4: Share of Products interms of Value in Total Knitwear Exports in 2006-07



Development Su
d 02. January 22

Table 8: Average Unit Prices for last 3 years of top ten (as of 2006-07 value) exported knitwear products (US\$ per unit)

HSCODE	COMMODITY	aup2004 -05	aup2005- 06	aup2006- 07	Cumulative Growth	Last Year Growth
61051000	MEN/BOYS SHIRTS COTTON KNI/CR	2.529	2.578	2.554	0.96%	-0.93%
61091000	T-SHIRT,SINGLET,VEST COT K/C	2.124	2.237	2.357	11.00%	5.36%
61152010	SOCKS FULL/KNEE LENGTH	0.298	0.288	0.292	-2.04%	1.39%
61059000	MEN/BOYS SHIRTS O/TEXTILE K/C	2.376	2.411	2.458	3.45%	1.95%
61061000	W/GIRL SHIR/BLOUSES COT KN/CR	2.195	2.221	2.290	4.30%	3.11%
61102000	JERSEY, PULOVER ETC.OF COT K/	2.391	2.549	2.552	6.72%	0.12%
61033200	JACKET/BLAZER MEN/BOY COT/KNI	2.641	2.738	2.638	-0.11%	-3.65%
61033900	JACKET/BLAZER MEN/BOYS OTH TE	2.409	2.604	2.667	10.71%	2.42%
61052000	MEN/BOYS SHIRTS M-MAD FIB K/C	2.298	2.487	2.476	7.74%	-0.44%
61142000	OTH GARMENT COTTON KNIT/CROCH	2.243	2.366	2.404	7.16%	1.61%

Contrary to the overall decline in average unit price,

Table 8 shows that average unit prices for most of the products have increased while only three commodities out of top ten have shown declining trend.

4.4 Regional Diversification of Knitwear Exports

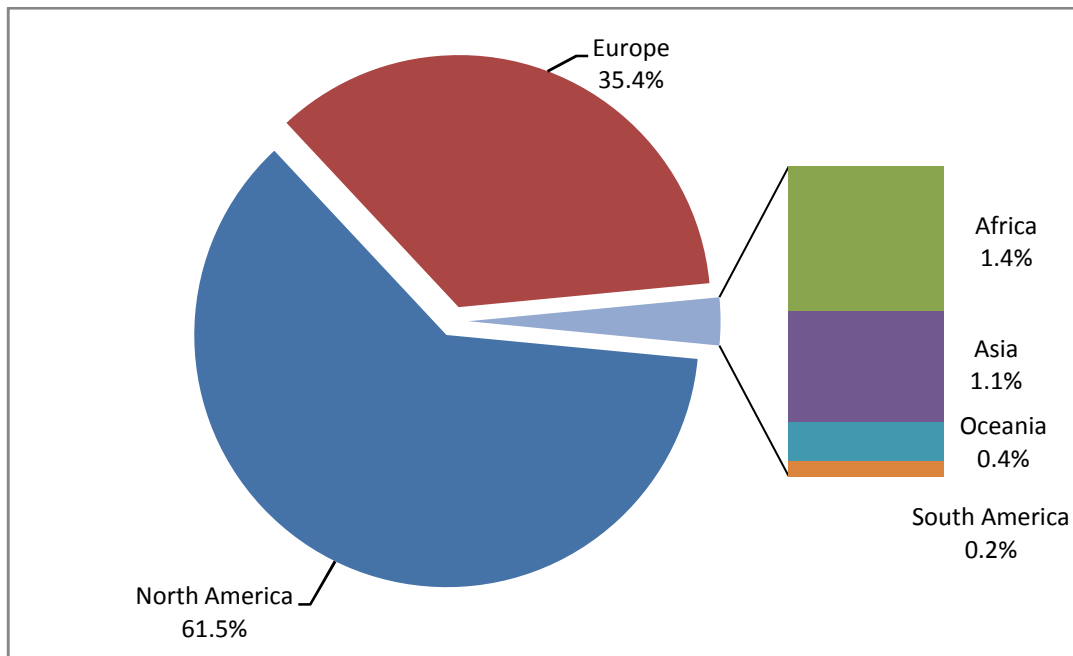
Following are the export to different regions of the world of knitwear products;

	2004- 2005 Quantity	2004- 2005 Value	2005- 2006 Quantity	2005- 2006 Value	2006- 2007 Quantity	2006- 2007 Value	Change in Quantity in last 3 years	Change in Value in last 3 years
North America	39.62	957.90	53.84	1,132.52	63.04	1,333.35	59%	39%*
Europe	26.93	551.96	27.24	547.80	31.83	596.02	18%	8%
Africa	0.79	22.28	0.57	11.70	0.50	12.97	-36%	-42%
Asia	0.75	16.87	0.69	11.84	0.40	6.29	-47%	-63%
Oceania	0.43	5.99	0.41	5.01	0.33	4.39	-24%	-27%
South America	0.16	2.36	0.30	1.99	0.21	2.44	31%	3%

*The difference in increase in quantity and value is due to change in export mix

As far as share portfolio is concerned our exports have remained stuck with Europe and North American markets and their combined share has increased from below 97% to more than 98.6%.

Pie 1: Knitwear Export Share to Different Regions (2004-05)



Pie 2: Knitwear Export Share to Different Regions (2006-07)

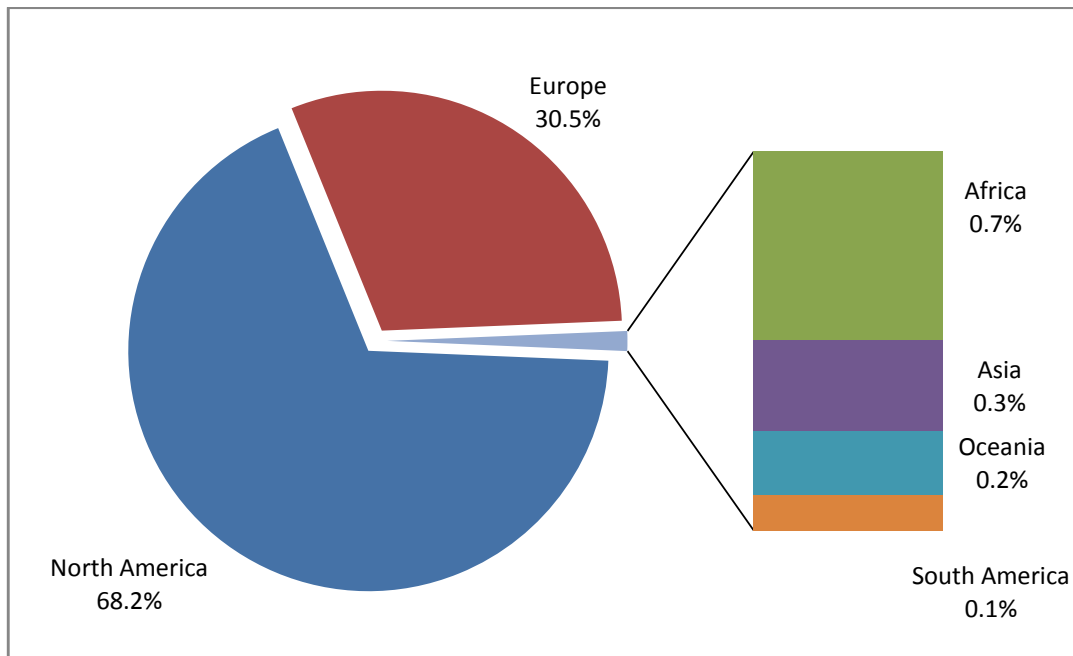


Table 9: Average Unit Price of Knitwear Products in different regions for the last 3 years (Figures in US\$ per Dozen)

	2004-05	2005-06	2006-07	Change in last 3 years
North America	24.18	21.04	21.15	-13%
Europe	20.50	20.11	18.72	-9%
Africa	28.14	20.46	25.73	-9%
Asia	22.47	17.14	15.86	-29%
Oceania	13.83	12.15	13.29	-4%
South America	14.75	6.70	11.66	-21%

The above result shows that there is decrease of unit value in all regions of the world of knitwear products with the highest decrease of value in Asian countries.

Table 10: Region-wise export performance of knitwear in R&D supported countries

	2004-05 Quantity	2004-05 Value	2005-06 Quantity	2005-06 Value	2006-07 Quantity	2006-07 Value	Change in Quantity from 2004 to 2007	Change in Value from 2004 to 2007
North America	39.17	951.37	53.51	1,127.51	62.46	1,325.72	59%	39%
Europe	26.59	543.67	26.86	542.00	31.10	587.79	17%	8%
Oceania	0.34	4.81	0.27	3.59	0.22	3.49	-35%	-27%
Asia	0.13	2.33	0.17	2.52	0.06	1.34	-53%	-42%

Table 11: Region-wise trend of Average Unit Price of knitwear in R&D supported countries

	2004-05	2005-06	2006-07	Change in last 3 years
North America	24.29	21.07	21.23	-13%
Europe	20.44	20.18	18.90	-8%
Oceania	14.21	13.19	15.93	12%
Asia	17.45	15.19	21.39	23%

This shows that with R&D Support, the unit value of products are decreasing in North America and Europe .

4.5 Conclusion

Knitwear product exports have shown a cumulative growth of 23% and 38% in terms of value and quantity respectively. However there is an overall decline in average unit price. The export mix indicates that this decline is observed due to increase in share of lower value added products in overall exports of Knitwear products.

As far as Average Unit prices are concerned, there is a very nominal increase in top ten exported commodities i.e. 4.9% in last two years.

Exports to R&D supported countries are increasing in terms of value and quantity. But to Non-R&D supported countries the exports are declining. Now we are more dependent on North American and EU market.

The biggest increase in knitwear exports in terms of value is observed to North America (+39% in last 3 years) with declining Average Unit Export Earning. Other regions where there is increase in last 3 years in value are Europe (+8%) and South America (+3%).

5 Effect of R&D Support on Woven Garments

Like Knitwear, 6% R&D support is also given on the export of Woven Garments w.e.f. July 2005. All product categories under Chapter 62 of HS-Codes have been included in the scheme³. Countries eligible for availing the 6% R&D Support facility are EU Countries, United States, Canada, Australia, Japan, and Switzerland.

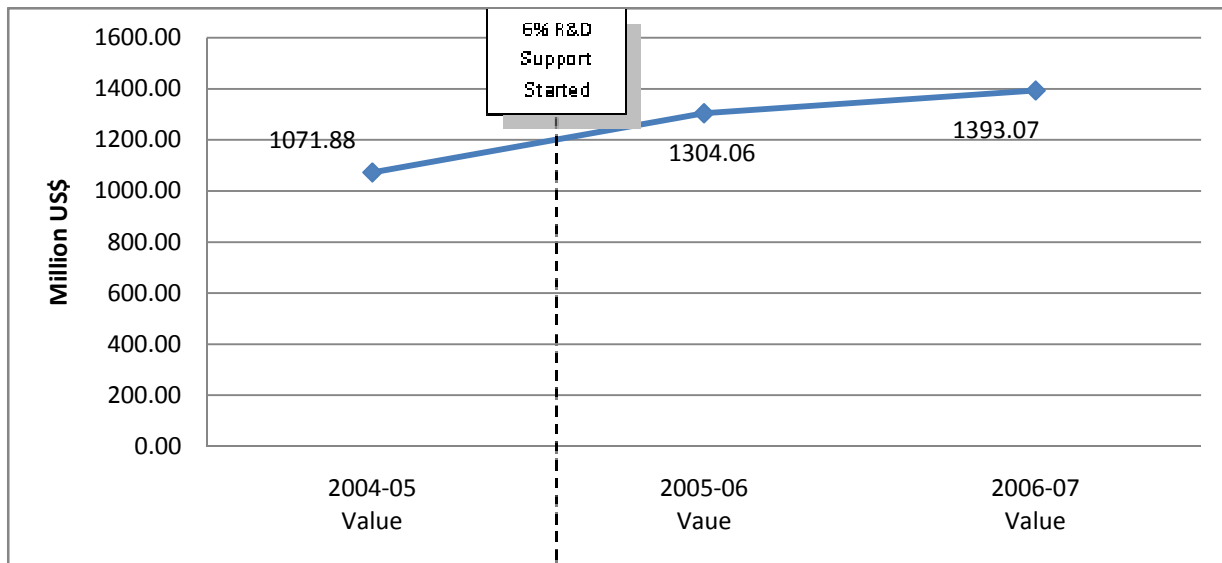
5.1 Overall Woven Garments Exports

Table 12: Woven Garments Exports (Quantity in Million Dozens, Value in Million US\$)

	2004-05 Quantity	2004-05 Value	2005-06 Quantity	2005-06 Value	2006-07 Quantity	2006-07 Value	Change in Quantity in last 3 years	Change in value in last 3 years
Woven Garments Exports	33.84	1071.88	37.05	1304.06	40.28	1393.07	19%	30%

³ 6 digit level details of products under Chapter 62 which are included in the study is given in Annex-IV.

Graph 5: Woven Garments Export Trend



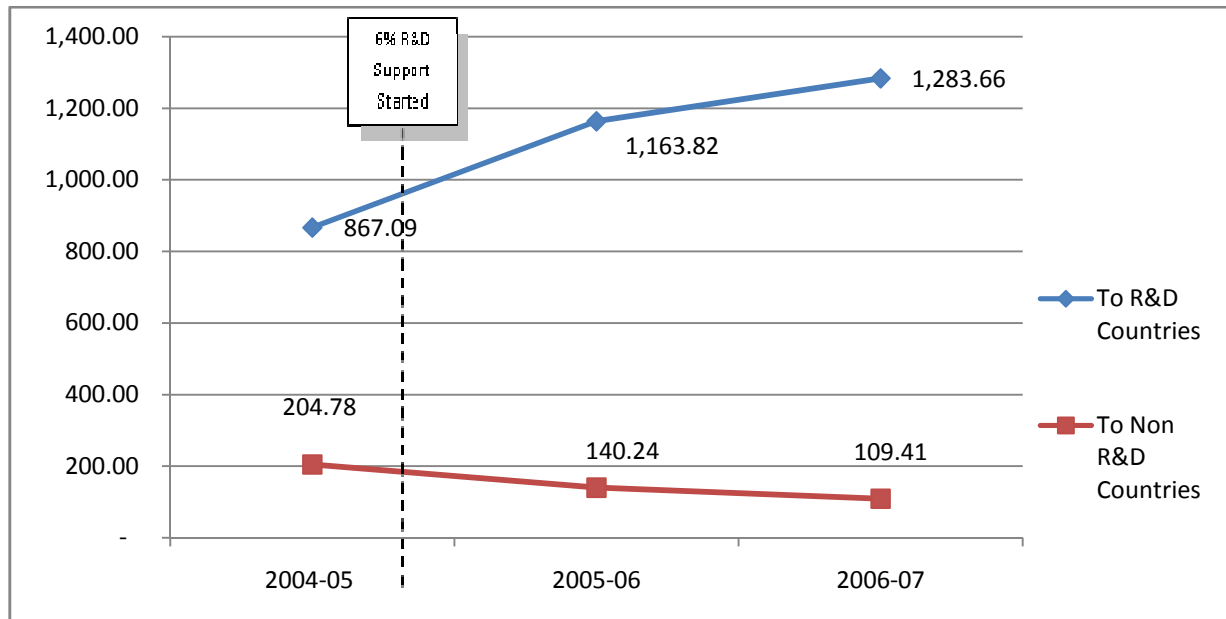
5.2 Exports to R&D and Non-R&D Supported Countries

The same trend has been observed in woven garment exports as experienced in Knitwear category. Following table and graphs depicts the same phenomena in different ways.

Table 13: Woven Garments Export to R&D and Non-R&D Supported Countries(Quantity in Million Dozens, Value in Million US\$)

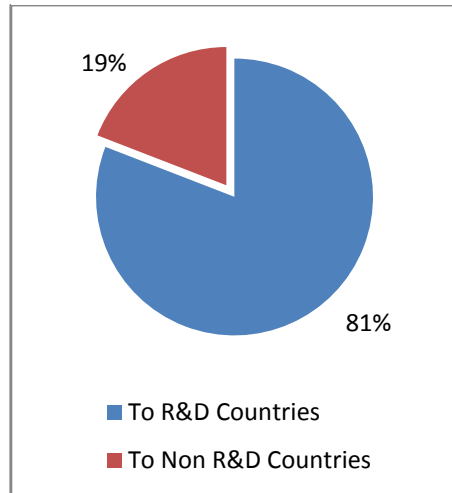
	2004-05 Quantity	2004-05 Value	2005-06 Quantity	2005-06 Value	2006-07 Quantity	2006-07 Value	Change in Quantity in Last 3 years	Change in Value from in Last 3 years
To R&D Countries	25.60	867.09	31.06	1,163.82	34.48	1,283.66	35%	48%
To Non R&D Countries	8.25	204.78	5.99	140.24	5.81	109.41	-30%	-47%
To World	33.84	1,071.88	37.05	1,304.06	40.28	1,393.07	19%	30%

Graph 6: Trend of Woven Garments Exports to R&D and Non-R&D Supported Countries (Figures in Million US\$)

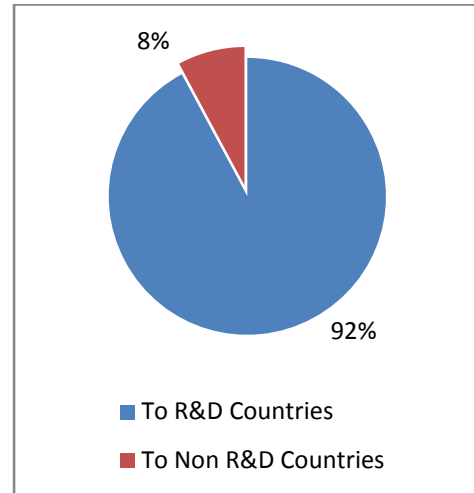


Following is the percentage shift in export values to R&D and Non R&D Countries;

Pie 3: Share of Woven Garments Export (2004-05)



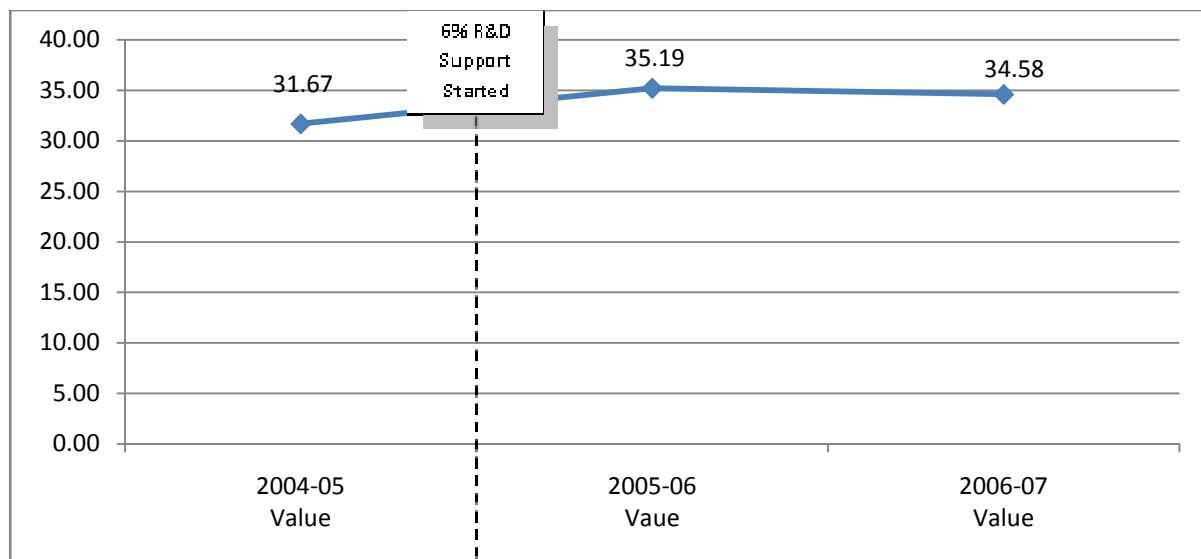
Pie 4: Share of Woven Garments Export (2006-07)



The double digit decline in non-R&D countries indicates that the support of 6% is so attractive that exporters have lost interest in non-R&D countries.

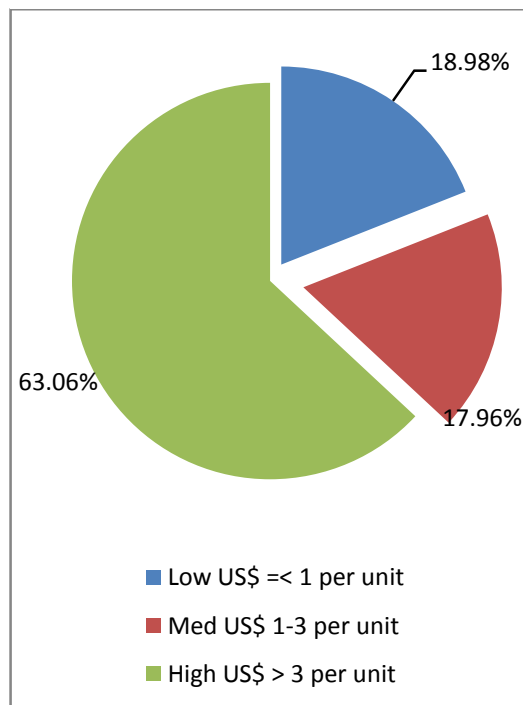
5.3 Effect on Average Unit Price

Graph 7: Trend of Average Unit Price (Values in US\$ per Dozen)



The average unit price have increased by almost 10% from 2004-05. One particular reason for this change is that we have increased the trade share of value added products in our portfolio. The following pie chart shows that share of products more than US\$3 per unit has increased enormously in 2006-07as compared to 2004-05.

Pie 5: Share of Products in terms of Value in Total Woven Garments Exports in 2004-05



Pie 6: Share of Products in terms of Value in Total Woven Garments Exports in 2006-07

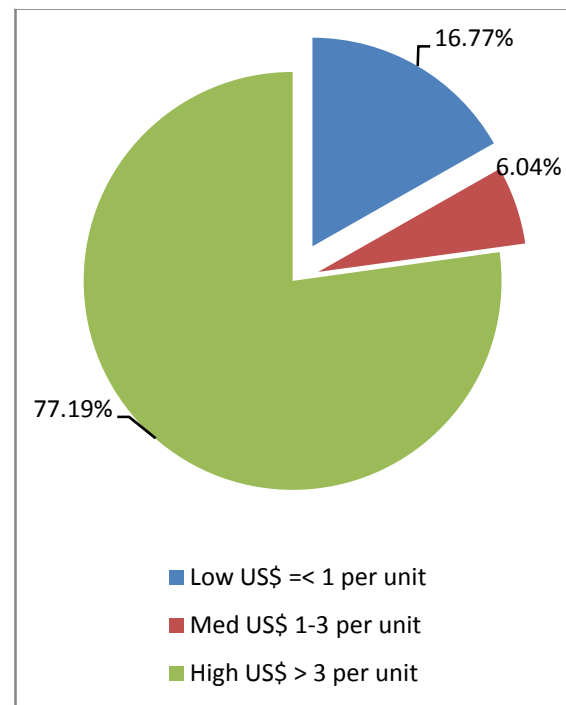


Table 14: Average unit prices for last 3 years of top ten (as of 2006-07 value) exported Woven Garments

HSCODE	COMMODITY	AUP 2004-05	AUP 2005-06	AUP 2006-07	Cumulative Growth	Last Year growth
62034200	OTH TROU BIB M/BOY COTT N/KNI	41.61	42.11	41.22	-0.94%	-2.11%
62046200	TROUSER W/GRL COTTON NOT KNIT	41.35	41.72	42.40	2.54%	1.63%
62046900	TROUSER W/GRL TEX MAT NOT KNI	38.34	39.85	41.33	7.79%	3.71%
62079100	BATHROB ETC MEN COTTON N/KNIT	474.41	483.58	475.57	0.25%	-1.66%
62052000	SHIRTS MEN/BOYS OF COT N/KNIT	39.78	41.30	40.63	2.13%	-1.62%
62033200	JACKET ETC MEN/BOY COT N/KNIT	43.47	44.53	43.97	1.16%	-1.25%
62160010	GLOVES OF TEXTILE FABRICS	4.02	4.45	4.77	18.73%	7.18%
62034900	OTH TROU BIB M/BOY TEXT N/KNI	38.37	39.90	39.81	3.75%	-0.23%
62149000	SHAWLS OF OTH TEX MATERIALS	26.19	25.66	26.02	-0.67%	1.37%
62143000	SHAWL,SCARVE ETC&LIKE SYN FIB	26.69	28.31	25.93	-2.84%	-8.41%

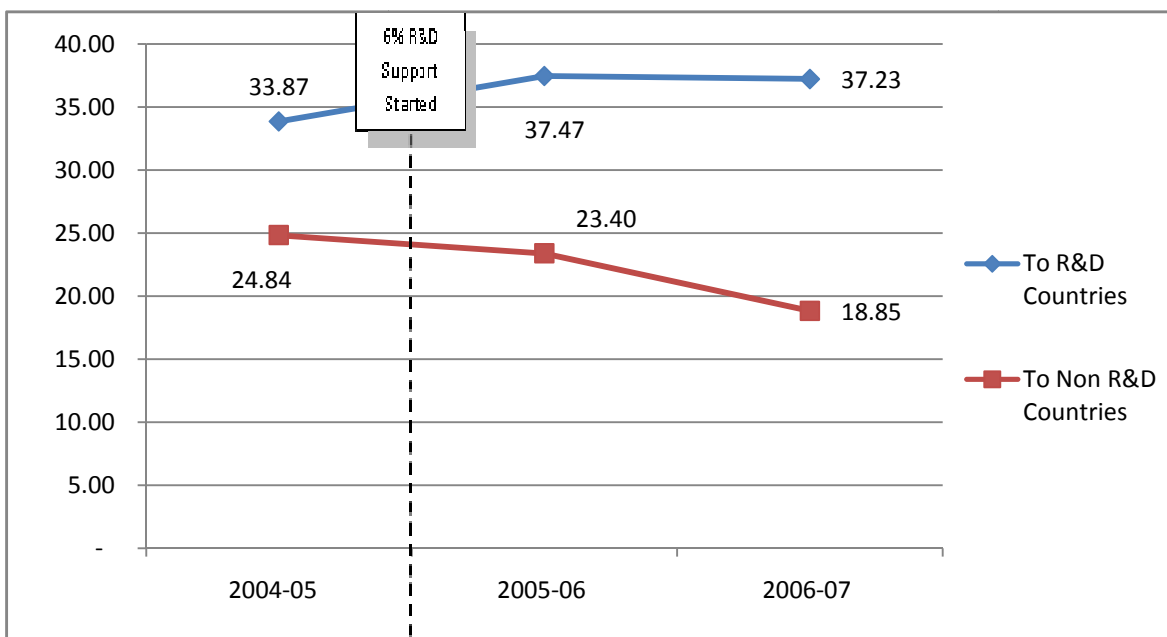
There is an average growth of more than 3% in top ten commodities if compared with 2004-05 however there is an **actual decline** in woven garments average unit prices from the last year prices.

If we split this trend in R&D and Non-R&D supported countries we come to another conclusion which is clearly indicated by the following table and graph.

Table 15: Average unit price comparison (US\$ per Dozen);

	2004-05	2005-06	2006-07	Change in last 3 years
To R&D Countries	33.87	37.47	37.23	10%
To Non R&D Countries	24.84	23.40	18.85	-24%

Graph 8: Average Unit Price Trend of Woven Garments Exports

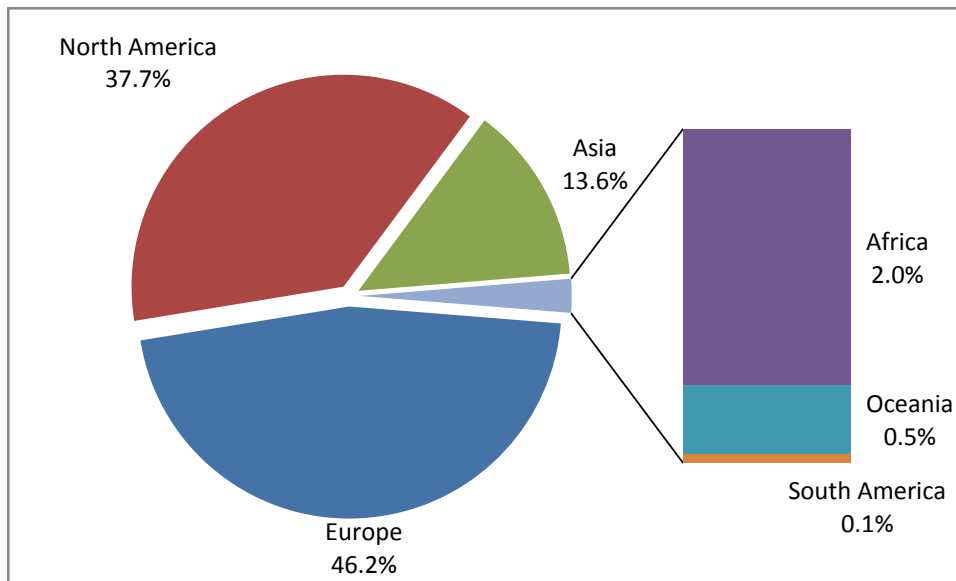


5.4 Regional Diversification of Woven Garments Exports

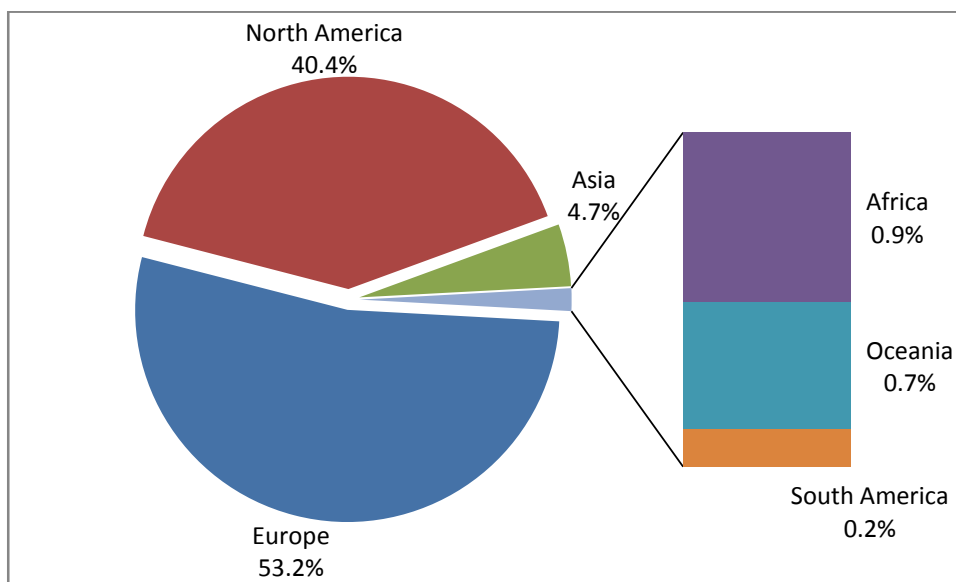
Table 16: Export trend of Woven Garments to different regions for 3 years

	2004-05 Quantity	2004-05 Value	2005-06 Quantity	2005-06 Value	2006-07 Quantity	2006-07 Value	Change in Quantity in Last 3 Years	Change in Value in Last 3 Years
Europe	14.92	477.42	17.59	628.06	20.61	735.95	38%	54%
North America	10.71	390.11	13.60	539.81	14.23	559.03	33%	43%
Asia	5.05	140.28	1.98	60.98	2.76	65.45	-45%	-53%
Africa	0.77	20.44	0.54	16.32	0.44	12.13	-43%	-41%
Oceania	0.16	5.49	0.29	8.73	0.27	9.10	68%	66%
South America	0.05	0.71	0.08	1.82	0.20	2.67	300%	278%

Pie 7: Woven Garments Export Share to Different Regions (2004-05)



Pie 8: Woven Garments Export Share to Different Regions (2006-07)



Likewise knitwear, major export destination has remained North America and Europe and further to that their combined share has risen from 83% to more than 93%. Contrary to that, Pakistani export share to Asian countries has declined from more than 13% to below 5%.

Table 17: Region-wise Average unit price trend of Woven Garments

	2004-05	2005-06	2006-07	Change in last 3 years
Asia	36.43	39.68	39.28	8%
Europe	32.00	35.70	35.71	12%
South America	33.75	30.48	33.24	-2%
North America	26.46	30.05	27.37	3%
Africa	27.76	30.73	23.74	-14%
Oceania	14.41	24.23	13.59	-6%

5.5 Conclusion

Woven Garments Exports shows increasing trend in terms of both quantity and value i.e. 19% and 30% respectively, in last two years. The Average Unit Price has increased due to higher share of value added products as compared to 2004-05.

Exports to Non-R&D supported countries are declining in terms of quantity, value and Average Unit Export Earning.

With declining exports to Asia and Africa, exports of woven garments to rest of the regions are increasing but we are becoming more dependent on European and American markets.

Share of value added items and average units price of major commodities has increased but this year hasn't been impressive enough as compared to last year performance. There is an actual decline in average unit prices in top ten exported woven garments categories in comparison to last year exports.

6 Effect of R&D Support on Made-ups Exports

Under the directives of the Ministry of Textile industry, several categories of fabrics and made-ups⁴ were included in R&D support. Specific countries⁵ are also mentioned for support and are increased from time to time. This will be clear from Figure 1 at page 3.

Home Textile is included as Chapter 63 of HS-Codes. Made-ups units are reported as Kilograms, Numbers, Tons and Dozens. For analysis of average unit prices only two units are derived; Kilograms and Dozens.

6.1 Overall Made-ups Exports

Table 18: Total World Export trend home textiles and for R&D Supported Categories. (US\$ Million)

	2004-05	2005-06	2006-07
R&D Supported	2,140.28	2,795.32	2,898.09
Growth		30.61%	3.68%
Total Made-ups	2,546.78	3,128.50	3,258.44
Growth		22.84%	4.15%
Share of R&D Supported Exports	84.04%	89.35%	88.94%

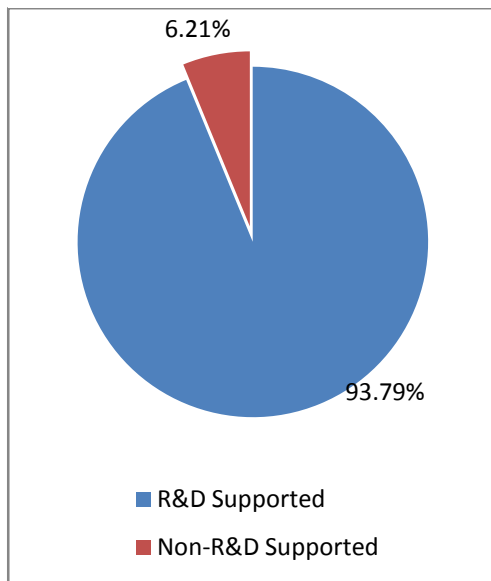
There is an impressive cumulative growth of 35% and 28% in R&D supported and overall Made-ups exports however after the launch of R&D support for Made-ups in 2005-06, the Non-Supported categories have performed better as compared to supported commodities.

⁴ List of Product HS-Codes included in R&D Support of 3% and 5% is given in Annex-V.

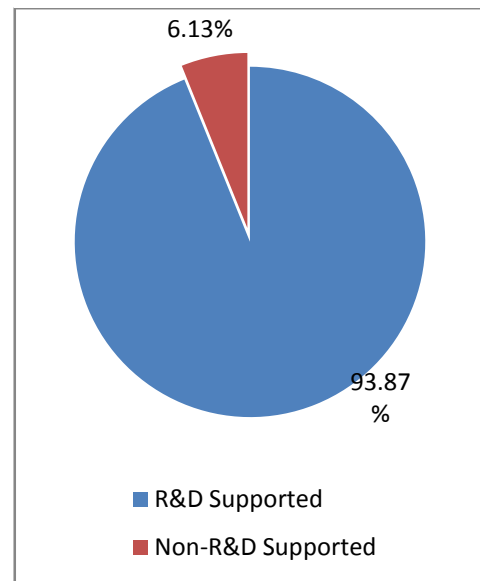
6.2 Exports to R&D and Non-R&D Supported Countries

Following is the R&D Supported Made-ups export trend to R&D and Non-R&D Countries;

Pie 13: R&D Supported Made-ups Exports to R&D and Non-R&D Supported Countries (2005-06)



Pie 14: R&D Supported Made-ups Exports to R&D and Non-R&D Supported Countries (2006-07)



The share of exports to R&D supported countries for R&D supported categories has increased very slightly.

6.3 Effect on Average Unit Price

Table 19: Average Unit Price Trend of Made-ups (US\$ per Unit)

	2004-05	2005-06	2006-07
AUP Total Quantities in KGs	4.51	4.68	4.71
AUP R&D Supported Quantities in KGs	4.85	4.92	5.02
AUP Total Quantities in DOZ	6.28	4.88	4.91
AUP R&D Supported Quantities in DOZ	6.92	5.29	5.20

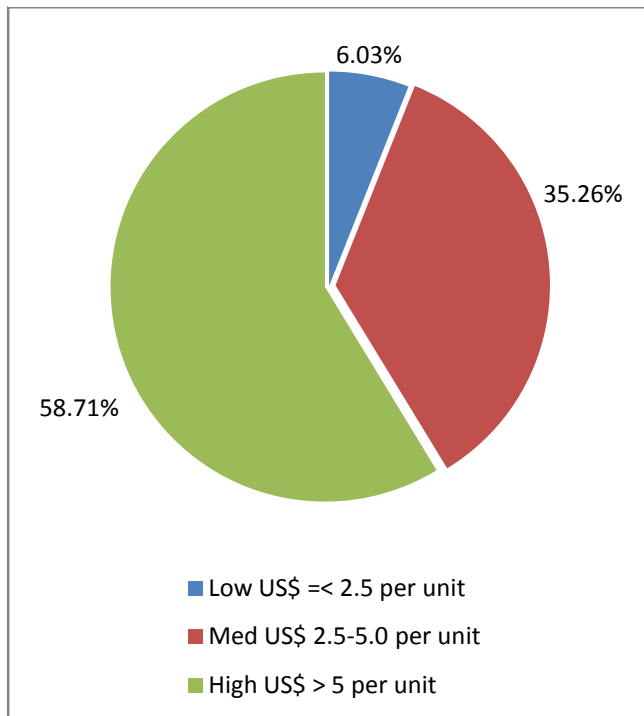
Majority of our exports is in KGs (more than 80%) which has shown positive growth in average unit price. The reason behind this increase is increasing average unit prices as well as shift from low value added products towards high end products.

Table 20: average unit prices for last 3 years of top ten (as of 2006-07 value) exported R&D Supported Made-ups reported in KGs

HSCODE	COMMODITY	AUP 2004-05	AUP 2005-06	AUP 2006-07	Growth After R&D Support
63026010	TOWELS OF COTTON MILL-MADE	3.70	3.69	3.82	3.37%
63023110	BED SHEETS OF COTTON MILL-MAD	5.57	5.55	5.51	-0.73%
63023190	OTH BED LINEN OF COTTON	5.62	5.64	5.97	5.86%
63021010	BED SHEETS,KNITTED/CROCHETED	5.21	5.27	5.20	-1.40%
63023200	OTH BED LINEN OF MAN-MADE FIB	5.46	5.44	5.62	3.23%
63023990	BED LINEN OTH TEX MAT NOT/KNI	5.32	5.40	5.46	1.04%
63022100	OTH BED LINEN,PRINTED,N/KNIT	5.34	5.22	5.60	7.26%
63021090	OTH BED LINEN,KNITTED/CROCH	5.53	5.47	5.45	-0.39%
63023910	BED SHEETS OTH TEX MAT HANDLO	4.87	4.86	5.68	16.88%
63023150	PILLOW-COVERS COTTON MILL-MAD	5.06	5.36	5.20	-2.93%

The share of value added products also show increase as compared to 2005-06.

Pie 10: Share of Products in terms of Value in Total Made-ups Exports in 2005-06



Pie 9: Share of Products in terms of Value in Total Made-ups Exports in 2006-07

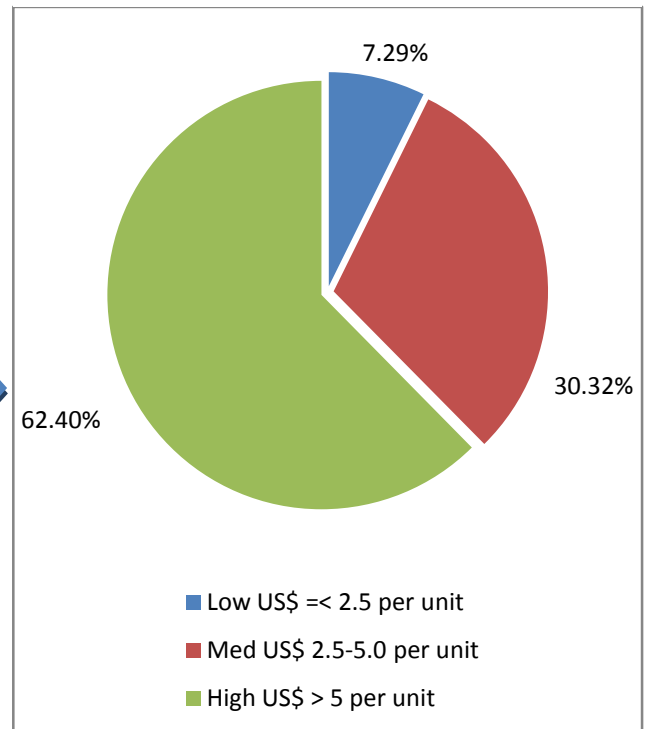


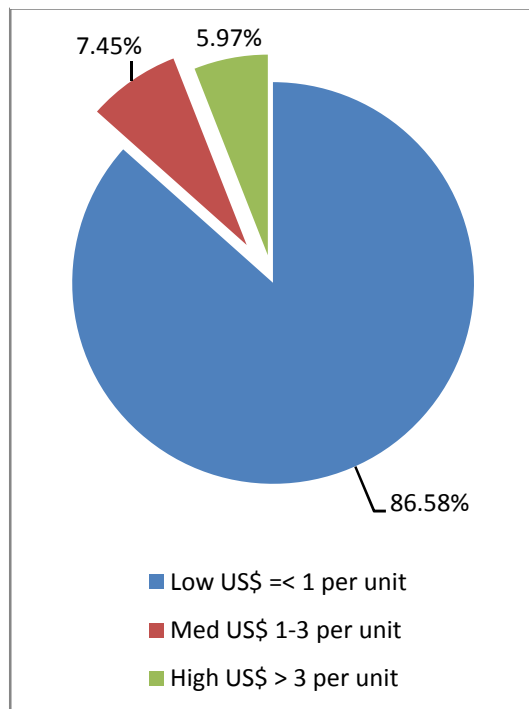
Table 21: average unit prices for last 3 years of top ten (as of 2006-07 value) exported R&D Supported Made-ups reported in Dozens

HSCODE	COMMODITY	AUP 2004-05	AUP 2005-06	AUP 2006-07	Growth After R&D
63071020	WASH-CLOTH	2.42	2.44	2.71	11.03%
63071040	BAR MOPS	2.55	2.75	2.61	-5.19%
63039110	CURTAINS OF COTTON MILL-MADE	50.10	56.78	56.50	-0.48%
63079090	OTHER MADE UP ARTICLES	16.67	22.03	22.32	1.35%
63071090	OTHER CLEANING CLOTH	2.58	2.60	2.91	12.01%
63031100	CURTAINS/BLINDS/VALANCE OF CO	44.75	55.50	57.92	4.34%
63013000	BLANKET/TRAVEL RUGS OF COTTON	55.55	60.84	62.13	2.13%
63071010	DISH-CLOTH	2.37	2.35	2.41	2.90%
63039900	OTH CURTAINS/VALANCE OF TEXMA	42.07	52.58	55.93	6.37%
63031900	CURTAINS/BLINDS/VALANCE TEXMA	42.83	52.23	53.74	2.89%

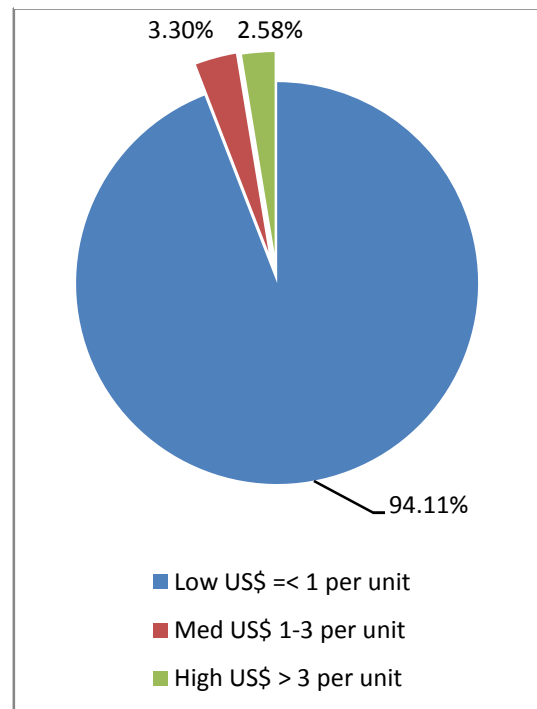
Except few commodities, rest shows positive growth in AUP.

The overall decline in average unit price of dozen categories can be linked with the shift towards non-value added products as reflected by the following charts.

Pie 11: Share of Products in terms of Value in Total Made-ups Exports in 2004-05



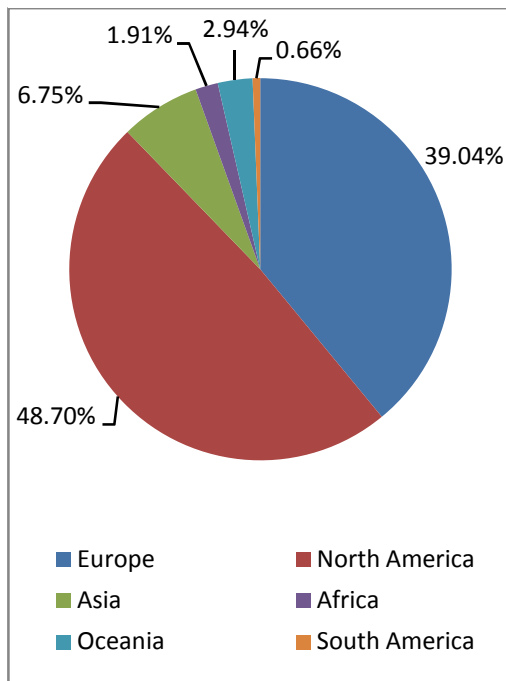
Pie 12: Share of Products in terms of Value in Total Made-ups Exports in 2006-07



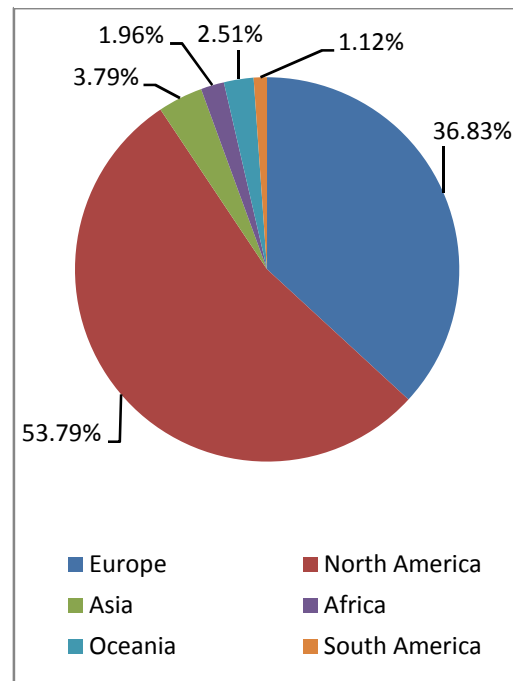
6.4 Regional Diversification

The following pie charts indicate that Pakistani made-ups exports are predominantly directed towards North American and European markets. Their combine share as an export destination has increased from below 88% to above 90% in last year.

Pie 13: Made-ups Export Share to Different Regions (2004-05)



Pie 14: Made-ups Export Share to Different Regions (2006-07)



6.5 Conclusion

There is an impressive cumulative growth of 35% and 28% in R&D supported and overall Made-ups exports however after the launch of R&D support for Made-ups in 2005-06, the Non-Supported categories have performed better as compared to supported commodities.

Made-ups export shows rather stabilizing effect as far as export values are concerned. However with respect to Average Unit Export Earning, there is decline for those products which are having Dozen as their unit. For those products where the units are reported in KGs (80% share), there is increase in Average Unit Export Earning.

The export performance of R&D supported Made-ups are declining in Non-R&D countries.

In overall made-ups the goal of regional diversification has not been achieved and in both (KG and Dozen Categories) our exports has grown towards North American and European markets

7 Summary

The study indicates that whereas the R&D support may have sustained textiles and clothing export to a certain extent, it has not played significant role in new product development, innovation and human resource development.

Till October 2007, R&D support worth Rs. 25.2 Billion has been disbursed to the Pakistani textile Industry. This report indicates that the overall export has increased but average unit price in all categories have declined as compared to last year (2005-06) except in Made-ups (KG Categories). Major reason appears to be shift towards lower-value added products in Knitwear and Made-ups (dozen categories) whereas declining prices in Woven Garments.

With the help of R&D support, the export performance of textile products was expected to show an increasing trend with new products in the exports portfolio. But the results show that current situation is not up to the intentions of R&D Support. The exports of low value added products are on the rise, while that of high value addition is declining. There is decrease in number of products in last 3 years in different categories as well.

It also appears that with the introduction of R&D support, preference for European and North American markets have also increased.

It is expected that changing global trends, shrinking of supply timelines, strengthened competitors', and emergence of new players will put more pressure on Pakistani textile industry in coming years and free cash support of R&D subsidy in this form may not be able to sustain the growth of textile industry.

It is recommended that Pakistani textile industry should take strong initiatives to boost their export earnings through targeted interventions on technology up-gradation, new product development, product/process innovations, enhancing operations and better supply chain management through deliberate improvement in entrepreneurship and human resource.

Annex-I: List of Textile Product HS-Codes Covered in R&D Support

6% Category

Chapter 61

Chapter 62

3% and 5% Category

52083100	52084900	52093900	52095900	52105100	52114300	52122300	54075400
54079300	55132100	55133900	55142300	55144200	55162300	55169200	59039000
60054300	60064200	63014000	63021090	63023110	63023200	63023990	63026090
63031900	63041900	63049200	63071020	94049000	52083200	52085100	52105200
52114900	52122400	54077200	54079400	55132200	55134100	55142900	55144300
55162400	55169300	60052200	60054400	60064300	63019000	63022100	63023130
63023910	63024000	63039110	63049300	63071040	52083300	52085200	52094100
52103100	52105900	52115100	52122500	54077300	54082200	55132300	55134200
55143100	55144900	55163200	55169400	60052300	60062200	60064400	63029900
63039190	63045900	52083900	52085300	52094200	52103200	52113100	52115200
54074200	54077400	54082300	55132900	55134300	55143200	55163300	59031000
60052400	60062300	63012000	63021010	63022200	63023150	63023920	63025190
63031100	63039210	63049110	63049900	63071050	52085900	52094300	52103900
52113200	52115900	54074300	54078200	54082400	55133100	55134900	55143300
55161200	55163400	60053200	60062400	63039290	52084100	52094900	52104100
52113900	52121300	54074400	54078300	54083200	55133200	55143900	55161300
55164200	59032000	60053300	60063200	63013000	63021020	63022900	63023190
63023930	63025900	63031200	63039900	63049190	63071010	63079090	52084200
52093100	52095100	52104200	52114100	52121400	54075200	54078400	54083300
55133300	55142100	55161400	55164300	60053400	60063300	63026010	63041100
52084300	52093200	52095200	52104900	52114200	52121500	54075300	54079200
54083400	55142200	55144100	55162200	55164400	60054200	60063400	

Annex-II: Region-wise Countries Covered in R&D Support

Asia

Uzbekistan	Turkmenistan	Kyrghistan	Kazakhstan	Tajikistan	Azerbaijan
Malaysia	Indonesia	China	Japan	Singapore	Bangladesh
India	Jordan	Lebanon	Srilanka	Turkey	Vietnam
Cambodia					

Europe

Austria	Belgium	Bulgaria	Cyprus	Czech Republic	Denmark
Estonia	Finland	France	Germany	Greece	Hungary
Ireland	Italy	Latvia	Lithuania	Luxembourg	Malta
Netherlands	Poland	Portugal	Romania	Slovakia	Slovenia
Spain	Sweden	United Kingdom	Switzerland	Ukraine	Belarus
Georgia	Armenia	Moldavia	Russian Federation	Norway	

South America

Argentina	Aruba	Bolivia	Brazil	Chile	Colombia
Ecuador	Falkland	French Guiana	Guyana	Netherlands A.	Paraguay
Peru	Suriname	Trinidad and Tobago	Uruguay	Venezuela	

North America

Canada	United States	Mexico
--------	---------------	--------

Oceania

Australia	New Zealand	Papua new Guinea
-----------	-------------	------------------

Africa

South Africa

Annex-III: 6 Digit HS-Code Products under Chapter 61 for Knitwear

6101	MEN'S OR BOYS' OVERCOATS ETC, KNIT OR CROCHET
610110	M/B OVERCOATS, CARCOATS, ETC OF WOOL, KNIT
610120	M/B OVERCOATS CARCOATS & SIMILAR ART COTTON, KNIT
610130	M/B OVERCOATS CARCOATS & SIMILAR ART MMF, KNIT
610190	M/B OVERCOATS CARCOATS & SMLR ART OT TEX MAT, KNIT
6102	WOMEN'S OR GIRLS' OVERCOATS ETC, KNIT OR CROCHET
610210	W/G OVERCOATS, CARCOATS, ETC OF WOOL, KNIT
610220	W/G OVERCOAT CARCOAT & SIMILAR ART COTTON, KNIT
610230	W/G OVERCOATS CARCOATS & SIMILAR ART MMF, KNIT
610290	W/G OVERCOATS CARCOATS & SMLR ART OT TEX MTRL,KNIT
6103	MEN'S OR BOYS' SUITS, ENSEMBLES ETC, KNIT OR CROCH
610311	MEN'S OR BOYS' SUITS OF WOOL, KNIT
610312	MEN'S OR BOYS' SUITS OF SYNTHETIC FIBERS, KNITTED
610319	MEN'S OR BOYS' SUITS, KNIT ETC, TEXTILE MAT NESOI
610321	M/B ENSEMBLES OF WOOL, KNIT
610322	MEN'S OR BOYS' ENSEMBLES OF COTTON, KNITTED OR CRO
610323	MEN'S OR BOYS' ENSEMBLES OF SYNTHETIC FIBERS, KNIT
610329	MEN'S OR BOYS' ENSEMBLES, KNIT ETC, TEXTILES NESOI
610331	M/B SUIT-TYPE JACKETS AND BLAZERS OF WOOL, KNIT
610332	M/B SUIT-TYPE JACKETS AND BLAZERS OF COTTON, KNIT
610333	M/B SUIT-TYPE JACKET & BLAZER SYNTHETIC FIBER,KNIT
610339	MEN'S OR BOYS' SUIT-TY JAC, KNIT ETC, TEXT NESOI
610341	M/B TROUSER OVERALLS SHORTS ETC WOOL, KNIT
610342	M/B TROUSERS OVERALLS SHORTS ETC COTTON, KNIT
610343	M/B TROUSERS OVERALLS SHORTS ETC SYN FIBERS, KNIT
610349	MEN'S OR BOYS' TROUSERS ETC, KNIT ETC, TEXT NESOI
6104	WOMEN'S OR GIRLS' SUITS, ENSEMB ETC, KNIT OR CROCH
610411	W/G SUITS OF WOOL, KNIT
610412	WOMEN'S OR GIRLS' SUITS OF COTTON, KNITTED OR CROC
610413	WOMEN'S OR GIRLS' SUITS OF SYNTHETIC FIBERS, KNITT
610419	WOMEN'S OR GIRLS' SUITS, KNIT ETC, TEXT MAT NESOI
610421	W/G ENSEMBLES OF WOOL, KNIT
610422	WOMEN'S OR GIRLS' ENSEMBLES OF COTTON, KNITTED OR
610423	W/G ENSEMBLES OF SYNTHETIC FIBERS, KNIT
610429	WOMEN'S OR GIRLS' ENSEMBLES, KNIT ETC, TEXT NESOI
610431	W/G SUIT-TYPE JACKETS AND BLAZERS OF WOOL, KNIT
610432	W/G SUIT-TYPE JACKETS AND BLAZERS OF COTTON, KNIT
610433	W/G SUIT-TYPE JACKETS/BLAZERS SYNTHETIC FIBER,KNIT
610439	WOMEN'S OR GIRLS' SU-TY JAC, KNIT ETC, TEXT NESOI
610441	W/G DRESSES OF WOOL, KNIT
610442	WOMEN'S OR GIRLS' DRESSES OF COTTON, KNITTED OR CR

610443	WOMEN'S OR GIRLS' DRESSES SYNTHETIC FIBERS, KNIT
610444	WOMEN'S OR GIRLS' DRESSES ARTIFICIAL FIBERS, KNIT
610449	WOMEN'S OR GIRLS' DRESSES OF TEXT MTRL NESOI, KNIT
610451	W/G SKIRTS AND DIVIDED SKIRTS OF WOOL, KNIT
610452	W/G SKIRTS AND DIVIDED SKIRTS OF COTTON, KNIT
610453	W/G SKIRTS & DIVIDED SKIRTS OF SYNTHETIC FIB, KNIT
610459	WOMEN'S OR GIRLS' SKIRTS ETC KNIT ETC, TEXT NESOI
610461	W/G TROUSERS OVERALLS BREECHES SHORTS OF WOOL,KNIT
610462	W/G TROUSERS OVERALLS BREECHES SHORTS COTTON, KNIT
610463	W/G TROUSER OVERALL BREECHES SHORTS SYN FIB, KNIT
610469	WOMEN'S OR GIRLS' TROUSERS ETC KNIT ETC, TEX NESOI
6105	MEN'S OR BOYS' SHIRTS, KNITTED OR CROCHETED
610510	MEN'S OR BOYS' SHIRTS OF COTTON, KNITTED OR CROCHE
610520	MEN'S OR BOYS' SHIRTS OF MANMADE FIBERS, KNITTED O
610590	MEN'S/BOYS' SHIRTS OF TEXTILE MATERIAL NESOI, KNIT
6106	WOMEN'S OR GIRLS' BLOUSES & SHIRTS, KNIT OR CROCH
610610	WOMEN'S OR GIRLS' BLOUSES AND SHIRTS COTTON, KNIT
610620	WOMEN'S OR GIRLS' BLOUSES/SHIRTS MANMADE FIB, KNIT
610690	W/G BLOUSES AND SHIRTS TEXTILE MATERIAL NESOI,KNIT
6107	MEN'S OR BOYS' UNDERPANTS, PJS, ETC, KNIT OR CROCH
610711	MEN'S OR BOYS' UNDERPANTS AND BRIEFS COTTON, KNIT
610712	MEN'S/BOYS' UNDERPANTS & BRIEFS MANMADE FIBER,KNIT
610719	MEN'S/BOYS' UNDERPANT,& BRIEFS, TEXT MATL NESOI,KT
610721	MEN'S OR BOYS' NIGHTSHIRT AND PAJAMAS COTTON, KNIT
610722	MEN'S/BOYS' NIGHTSHIRT AND PAJAMAS MANMADE FIB, KT
610729	M/B NIGHTSHIRTS & PAJAMAS OF TEXT MTL NESOI, KNIT
610791	MEN'S OR BOYS' BATHROBES AND SIMILAR ART COTTON,KT
610792	M/B BATHROBES AND SIMILAR ARTICLE MANMADE FIB, KT
610799	M/B BATHROBES & SIMILAR ART OF TEXT MATL NESOI, KT
6108	WOMEN'S OR GIRLS' SLIPS, PJS, ETC, KNIT OR CROCHET
610811	WOMEN'S/GIRLS' SLIPS & PETTICOATS MANMADE FIB, KT
610819	W/G SLIPS AND PETTICOATS OF TEXTILE MAT NESOI, KT
610821	WOMEN'S OR GIRLS' BRIEFS AND PANTIES COTTON, KNIT
610822	WOMEN'S/GIRLS' BRIEFS & PANTIES MANMADE FIBER, KT
610829	W/G BRIEFS & PANTIES OF TEXTILE MAT NESOI, KNIT
610831	W/G NIGHTDRESSES & PAJAMAS OF COTTON, KNIT
610832	W/G NIGHTDRESSES & PAJAMAS MANMADE FIBERS, KNIT
610839	W/G NIGHTDRESSES & PAJAMAS OF TEXTILE MAT NESOI KT
610891	W/G NEGLIGEEES BATHROBES & SIMILAR ART COTTON, KNIT
610892	W/G NEGLIGEEES BATHROBES & SIMILAR ART MMF, KNIT
610899	W/G NEGLIGEEES & SIMILAR ART TEXT MATL NESOI, KNIT
6109	T-SHIRTS, SINGLET, TANK TOPS ETC, KNIT OR CROCHET
610910	T-SHIRTS, SINGLET, TANK TOPS ETC, KNIT ETC COTTON
610990	T-SHIRTS, SINGLET ETC, KNIT ETC, TEXTILES NESOI
6110	SWEATERS, PULLOVERS, VESTS ETC, KNIT OR CROCHETED

611010	SWEATERS, PULLOVERS ETC, KNIT ETC, WOOL
611020	SWEATERS, PULLOVERS ETC, KNIT ETC, COTTON
611030	SWEATERS, PULLOVERS ETC, KNIT ETC, MANMADE FIBERS
611090	SWEATERS, PULLOVERS ETC, KNIT ETC, TEXTILES NESOI
6111	BABIES' GARMENTS & ACCESSORIES, KNIT OR CROCHETED
611110	BABIES' GARMENTS & CLTHNG ACCESS OF WOOL, KNIT
611120	BABIES' GARMENTS & CLTHNG ACCESS OF COTTON, KNIT
611130	BABIES' GARMENTS & CLTHNG ACCESS SYN FIBERS, KNIT
611190	BABIES' GARMENTS ETC, KNIT ETC, TEXTILES NESOI
6112	TRACK SUITS, SKI-SUITS & SWIMWEAR, KNIT OR CROCHET
611211	TRACK & WARM-UP SUITS ETC, KNIT ETC, COTTON
611212	TRACK & WARM-UP SUITS ETC, KNIT ETC, SYNTH FIBERS
611219	TRACK & WARM-UP SUITS ETC, KNIT ETC, TEXTILE NESOI
611220	SKI SUITS, KNITTED OR CROCHETED
611231	MEN'S OR BOYS' SWIMWEAR OF SYNTHETIC FIBERS, KNIT
611239	M/B SWIMWEAR OF OTHER TEXTILE MATERIALS, KNIT
611241	WOMEN'S OR GIRLS' SWIMWEAR SYNTHETIC FIBERS, KNIT
611249	W/G SWIMWEAR OF OTHER TEXTILE MATERIALS, KNIT
6113	GARMENTS, KNIT ETC, COATED ETC RUBBER, PLASTIC ETC
611300	GARMENTS, KNIT ETC, COATED ETC RUBBER, PLASTIC ETC
6114	GARMENTS NESOI, KNITTED OR CROCHETED
611410	OTHER GARMENTS OF WOOL OR FINE ANIMAL HAIR, KNITTED
611420	OTHER GARMENTS OF COTTON, KNITTED OR CROCHETED
611430	OTHER GARMENTS OF MANMADE FIBERS, KNITTED OR CROCH
611490	OTHER GARMENTS OF OTHER TEXTILE MATERIALS, KNITTED
6115	PANTYHOSE, SOCKS & OTHER HOSIERY, KNIT OR CROCHET
611511	PANTY HOSE & TIGHT SYN FIB MEAS <67 DCTX/SYN, KNIT
611512	PANTY HOSE & TIGHT SYN FIB 67 DCTX OR MORE/SYN,KNIT
611519	PANTYHOSE & TIGHTS TEX MATERIAL EX SYNTHETIC, KNIT
611520	WOMEN'S HOSIERY < 67 DCTX/SINGLE YARN, KNIT
611591	SOCKS & OT HOSRY & FTWR W/OUT APPLD SLS WOOL, KNIT
611592	SOCKS & OTHER HOSIERY NESOI OF COTTON, KNIT
611593	SOCKS & OTHER HOSIERY NESOI OF SYN FIBERS, KNIT
611599	SOCKS & OTHER HOSIERY TEXTILE MATERIALS NESOI, KT
6116	GLOVES, MITTENS AND MITTS, KNITTED OR CROCHETED
611610	GLOVES IMPREG CTD OR COV W PLAS/RUBBER, KNIT
611691	GLOVES, MITTENS AND MITTS OF WOOL ETC, KNIT
611692	GLOVES, MITTENS AND MITTS OF COTTON, KNITTED OR CR
611693	GLOVES, MITTENS AND MITTS SYNTHETIC FIBERS, KNIT
611699	GLOVES, MITTENS & MITTS OTHER TEXTILE MTRL, KNIT
6117	MADE-UP CLOTHING ACCESS NESOI, PARTS ETC, KNIT ETC
611710	SHAWLS, SCARVES, MUFFLERS, VEILS & THE LIKE, KNIT
611720	TIES, BOW TIES AND CRAVATS, KNITTED OR CROCHETED
611780	OTHER MADE-UP CLOTHING ACCESSORIES, KNITTED OR CRO
611790	PARTS OF GARMENTS OR OF CLOTHING ACCESSORIES, KNIT

Annex-IV: 6 Digit HS-Code Products under Chapter 62 for Woven Garments

6201	MEN'S OR BOYS' OVERCOATS, CLOAKS ETC, NOT KNIT ETC
620111	M/B OVERCOATS CARCOATS SIMILAR ART WOOL, NOT KNIT
620112	MEN'S OR BOYS' OVERCOATS ETC, NOT KNIT, COTTON
620113	MEN'S OR BOYS' OVERCOATS ETC, NOT KNIT, MNMD FIBER
620119	M/B OVERCOATS CARCOATS SMLR ART OTH TEX MTL, NT KT
620191	M/B ANORAKS, SKI JACKETS & SMLR ART WOOL, NOT KNIT
620192	M/B ANORAKS, SKI JACKETS & SMLR ART COTTON, NT KT
620193	M/B ANORAKS SKI JACKETS & SMLR ART MANMADE FIB,NKT
620199	M/B ANORAK SKI JACKET & SMLR ART OT TEX MTRL, N KT
6202	WOMEN'S OR GIRLS' OVERCOATS ETC, NOT KNIT OR CROCH
620211	W/G OVERCOATS RAINCOATS & SMLR ARTICLE WOOL, N KT
620212	WOMEN'S OR GIRLS' OVERCOATS ETC, NOT KNIT, COTTON
620213	WOMEN'S OR GIRLS' OVERCOATS ETC, NOT KNIT, MM FIB
620219	W/G OVERCOATS & SIMILAR COATS OT TEX MTRL, N KNIT
620291	W/G ANORAKS SKI JACKETS & SMLR ARTICLES WOOL, N KT
620292	W/G ANORAKS SKI JACKETS & SMLR ARTICLE COTTON,N KT
620293	W/G ANORAKS SKI JACKETS & SMLR ARTICLES MMF, N KT
620299	W/G ANORAKS SKI JACKET & SMLR ART OT TEX MTRL,N KT
6203	MEN'S OR BOYS' SUITS, ENSEMBLES ETC, NOT KNIT ETC
620311	MEN'S OR BOYS' SUITS OF WOOL, NOT KNIT
620312	MEN'S OR BOYS' SUITS OF SYNTHETIC FIBERS, NOT KNIT
620319	MEN'S OR BOYS' SUITS OF TEXTILE MAT NESOI, N KNIT
620321	MEN'S OR BOYS' ENSEMBLES OF WOOL, NOT KNITTED
620322	MEN'S OR BOYS' ENSEMBLES OF COTTON, NOT KNITTED OR
620323	MEN'S OR BOYS' ENSEMBLES SYNTHETIC FIBERS, NT KNIT
620329	MEN'S OR BOYS' ENSEMBLES, NOT KNIT, TEXTILES NESOI
620331	M/B SUIT-TYPE JACKETS AND BLAZERS OF WOOL, NT KNIT
620332	MEN'S/BOYS' SUIT-TYPE JACKETS & BLAZERS COT, N KT
620333	M/B SUIT-TYPE JACKETS & BLAZERS SYNTHETIC FIB,N KT
620339	MEN'S OR BOYS' SUIT-TY JAC, NOT KNIT, TEXT NESOI
620341	M/B TROUSER OVERALLS BREECHES SHORTS WOOL, NT KNIT
620342	MEN'S OR BOYS' TROUSERS ETC, NOT KNIT, COTTON
620343	MEN'S OR BOYS' TROUSERS ETC, NOT KNIT, SYNTH FIBER
620349	MEN'S OR BOYS' TROUSERS ETC, NOT KNIT, TEXT NESOI
6204	WOMEN'S OR GIRLS' SUITS, ENSEMB ETC, NOT KNIT ETC
620411	W/G SUITS OF WOOL, NOT KNIT
620412	WOMEN'S OR GIRLS' SUITS OF COTTON, NOT KNITTED OR
620413	WOMEN'S OR GIRLS' SUITS SYNTHETIC FIBERS, NOT KNIT
620419	WOMEN'S OR GIRLS' SUITS, NOT KNIT, TEXTILES NESOI
620421	WOMEN'S OR GIRLS' ENSEMBLES OF WOOL, NOT KNIT
620422	WOMEN'S OR GIRLS' ENSEMBLES OF COTTON, NOT KNITTED
620423	WOMEN'S OR GIRLS' ENSEMBLES SYNTHETIC FIBERS, N KT
620429	WOMEN'S OR GIRLS' ENSEMBLES, NOT KNIT, TEXT NESOI

620431	W/G SUIT-TYPE JACKETS AND BLAZERS WOOL, NOT KNIT
620432	W/G SUIT-TYPE JACKETS AND BLAZERS COTTON, NOT KNIT
620433	W/G SUIT-TYPE JACKETS & BLAZERS SYN FIBERS, N KNIT
620439	WOMEN'S OR GIRLS' SUIT-TY JAC, NOT KNIT, TEX NESOI
620441	WOMEN'S OR GIRLS' DRESSES OF WOOL, NOT KNITTED
620442	WOMEN'S OR GIRLS' DRESSES OF COTTON, NOT KNITTED
620443	WOMEN'S OR GIRLS' DRESSES SYNTHETIC FIBERS, NT KT
620444	WOMEN'S OR GIRLS' DRESSES ARTIFICIAL FIBERS, N KT
620449	WOMEN'S OR GIRLS' DRESSES OT TEXTILE MTRL, NT KNIT
620451	WOMEN'S/GIRLS' SKIRTS & DIVIDED SKIRTS WOOL, NT KT
620452	WOMEN'S/GIRLS' SKIRTS & DIVIDED SKIRTS COTTON,N KT
620453	WOMEN'S/GIRLS' SKIRTS SYNTHETIC FIBERS, NOT KNIT
620459	WOMEN'S OR GIRLS' SKIRTS ETC, NOT KNIT, TEXT NESOI
620461	W/G TROUSERS OVERALLS BREECHES SHORTS WOOL,NT KNIT
620462	WOMEN'S OR GIRLS' TROUSERS ETC NOT KNIT, COTTON
620463	WOMEN'S OR GIRLS' TROUSERS ETC NOT KNIT, SYN FIBER
620469	WOMEN'S OR GIRLS' TROUSERS ETC NOT KNIT, TEX NESOI
6205	MEN'S OR BOYS' SHIRTS, NOT KNITTED OR CROCHETED
620510	MEN'S OR BOYS' SHIRTS OF WOOL, NOT KNIT
620520	MEN'S OR BOYS' SHIRTS, NOT KNIT, OF COTTON
620530	MEN'S OR BOYS' SHIRTS, NOT KNIT, MANMADE FIBERS
620590	MEN'S OR BOYS SHIRTS OT TEXTILE MAT NESOI, NT KNIT
6206	WOMEN'S OR GIRLS' BLOUSES, SHIRTS ETC NOT KNIT ETC
620610	W/G BLOUSES, SHIRTS AND SHIRT BLOUSES SILK, NT KT
620620	W/G BLOUSES, SHIRTS AND SHIRT BLOUSES WOOL, NT KT
620630	W/G BLOUSES SHIRTS & SHIRT BLOUSES COTTON,NOT KNIT
620640	W/G BLOUSES, SHIRTS & SHIRT BLOUSES MMF, NOT KNIT
620690	W/G BLOUSES SHIRTS ETC OT TEXTILE MATERIALS, NT KT
6207	MEN'S OR BOYS' UNDERSHIRTS ETC, NOT KNIT OR CROCH
620711	M/B UNDERPANTS AND BRIEFS OF COTTON, NOT KNIT
620719	M/B UNDERPANTS AND BRIEFS OT TEXTILE MTRL,NOT KNIT
620721	M/B NIGHTSHIRTS AND PAJAMAS OF COTTON, NOT KNIT
620722	M/B NIGHTSHIRTS & PAJAMAS MANMADE FIBERS, NOT KNIT
620729	M/B NIGHTSHIRTS & PAJAMAS OT TEXTILE MTRL, NT KNIT
620791	MEN'S OR BOYS' SINGLETS ETC, NOT KNIT, OF COTTON
620792	MEN'S OR BOYS' SINGLETS ETC, NOT KNIT, MNMD FIBERS
620799	MEN'S OR BOYS' SINGLETS ETC, NOT KNIT, TEXT NESOI
6208	WOMEN'S OR GIRLS' SLIPS ETC, NOT KNIT OR CROCHET
620811	W/G SLIPS AND PETTICOATS MANMADE FIBERS, NOT KNIT
620819	W/G SLIPS & PETTICOATS OT TEXTILE MATERIALS, N KT
620821	W/G NIGHTDRESSES AND PAJAMAS COTTON, NOT KNIT
620822	W/G NIGHTDRESSES & PAJAMAS MANMADE FIBERS, NOT KT
620829	W/G NGHTDRESS & PAJAMAS OT TETILE MATERIAL, N KNIT
620891	WOMEN'S OR GIRLS' UNDSHIRTS ETC, NOT KNIT, COTTON
620892	WOMEN'S OR GIRLS' UNDSHIRTS ETC, NOT KNIT, MM FIBR

620899	WOMEN'S OR GIRLS' UNDSHIRT ETC, NO KNIT, TEX NESOI
6209	BABIES' GARMENTS & ACCESSORIES, NOT KNIT OR CROCH
620910	BABIES' GRMNT & CLTHNG ACCESSORIES WOOL NOT KNIT
620920	BABIES' GARMENTS & CLTHNG ACCESS COTTON NOT KNIT
620930	BABIES' GARMENTS/CLTHNG ACCESS SYN FIBERS,NOT KNIT
620990	BABIES' GARMENTS/CLTHNG ACCESS OT TEX MTRL, NOT KNI
6210	GARMENTS, OF FELT ETC, OR FABRIC IMPREGNATED ETC
621010	GARMENTS OF FABRIC OF FELTS/NONWOVEN
621020	M/B OVERCOATS ETC IMPREGNATED, RUBBERIZED ETC N KT
621030	W/G OVERCOAT ETC IMPREGNATED, RUBBERIZED ETC. N KT
621040	MEN'S OR BOYS' GARMENTS, NOT KNIT, COATED ETC
621050	WOMEN'S OR GIRLS' GARMENTS, NOT KNIT, COATED ETC
6211	TRACK SUITS, SKI-SUITS & SWIMWEAR, NOT KNIT ETC
621111	MEN'S OR BOYS' SWIMWEAR, NOT KNITTED OR CROCHETED
621112	WOMEN'S OR GIRLS' SWIMWEAR, NOT KNITTED OR CROCHET
621120	SKI-SUITS, NOT KNITTED OR CROCHETED
621131	MEN'S OR BOYS' OTHER GARMENTS OF WOOL, NOT KNIT
621132	MEN'S OR BOYS' OTHER GARMENTS OF COTTON, NOT KNITT
621133	MEN'S OR BOYS' OTHER GARMENTS MANMADE FIBERS, N KT
621139	MEN'S OR BOYS' OT GARMENTS OT TEXTILE MTRL, N KNIT
621141	OTH GAR WOM GRLS WOL ANML HR EX TRK SKI-SUIT SMWR
621142	OTH GAR WOM GRLS COTTON EX TRACK SKI-SUITS SWMWER
621143	OTH GAR WOM GRLS MM FIB EX TRACK SKI-SUITS SWMWER
621149	OTH GAR WOM GRLS OTH TEX MTRLS EX WL AML HR CT MM
6212	BRAS, GIRDLES, GARTERS ETC., KNITTED ETC OR NOT
621210	BRASSIERES, KNIT OR CROCHETED OR NOT
621220	GIRDLES & PANTY GIRDLES, KNIT OR CROCHETED OR NOT
621230	CORSETS, KNITTED OR CROCHETED OR NOT
621290	BRACES SUSPENDERS GARTERS ART PARTS KT O CT
6213	HANDKERCHIEFS
621310	HANDKERCHIEFS, OF SILK OR SILK WASTE
621320	HANDKERCHIEFS, OF COTTON
621390	HANDKERCHIEFS, OF OTHER TEXTILE MATERIALS
6214	SHAWLS, SCARVES, MUFFLERS, MANTILLAS, VEILS ETC.
621410	SHAWLS, SCARVES ETC OF SILK OR SILK WASTE NOT KNIT
621420	SHAWLS SCARVES AND THE LIKE OF WOOL, NOT KNIT
621430	SHAWLS SCARVES AND THE LIKE OF SYNTHETIC FIB, N KT
621440	SHAWLS SCARVES AND THE LIKE ARTIFICIAL FIBER, N KT
621490	SHAWLS SCARVES AND THE LIKE TEXTILE MTRL NESOI,NKT
6215	TIES, BOW TIES & CRAVATS, NOT KNITTED OR CROCHETED
621510	TIES, BOW TIES AND CRAVATS, OF SILK ETC, NOT KNIT
621520	TIES BOW TIES AND CRAVATS MANMADE FIBERS, NT KNIT
621590	TIES, BOW TIES AND CRAVATS, OF OTH TEXT, NOT KNIT
6216	GLOVES, MITTENS AND MITTS, NOT KNIT OR CROCHETED
621600	GLOVES, MITTENS AND MITTS, NOT KNIT OR CROCHETED

6217	MADE-UP CL ACCESS NESOI, GARMENT ETC PARTS NESOI
621710	OTH MADE-UP CLOTHING ACCESS NESOI
621790	PARTS OF GARMENTS AND CLOTHING ACCESSORIES, NESOI

Annex-V: 3% and 5% R&D Supported Products

52083100 WOV FAB COT WT 100G/SQM DYED
 52083200 WOV FAB COT WT>100G/SQM DYED
 52083300 COTTON WOV FAB 3/4 THREAD DYE
 52083900 OTH COTON WOV FAB<2000/SQM DY
 52084100 WOV FAB COT WT 100G/SQM COLOUR
 52084200 COTON WOV FAB WT>100G/SQM COL
 52084300 COTTON WOV FAB 3/4 THREAD TWI
 52084900 OTH WOV FAB WT 200G/SQM
 52085100 COTON WOV FAB 100G/SQM PRINTE
 52085200 COTON WOV FAB>100G/SQM PRINTE
 52085300 COTTON WOV FAB 3/4 THREAD TWI
 52085900 OTH COT WOV FAB 200G/SQM PRIN
 52093100 COTTON WOV FAB DYED>200G/SQM
 52093200 COTTON WOV FAB DYED 3-4 THREA
 52093900 OTH COT WOV FAB DYED>200G/SQM
 52094100 COT WOV FAB>200G/SQM 85% COT
 52094200 COTTON WOV FAB DENIM>200G/SQM
 52094300 WOV FAB 3-4-THREAD TWILL>200G
 52094900 OTH WOV FAB CONT 85% COT/YARN
 52095100 COTTON WOV FAB PRINTED>200GSQ
 52095200 WOV FAB 3-4-THREAD TWILL PRINT
 52095900 OTH WOV FAB PRINTED>200G/SQM
 52103100 COT WOV FAB MX-MMF200G/SQM DY
 52103200 W-FAB3/4THR MX-MMW 200G/MW DYE
 52103900 OTH W-FAD COTMX MF W200G/SQMD
 52104100 W-FAB COT MX-MMF 200G/SQM
 52104200 W-FAB 3/4THRD MX MMF W200G/SQ
 52104900 OTH W-FAB COT MX-MMF W200G/SQ
 52105100 W-FAB COT MIX,MF W200G/SQM PR
 52105200 COT WOV FAB3-4THREAD PRINTED
 52105900 OTH W-FAB COT,MMF W 200G PRIN
 52113100 WW-FAB COT,MMF W>200G/SQM DYED
 52113200 WOV FAB 3-4THREAD MIX>200GDYED
 52113900 OTH W-FAB COT,MMF W>200G DYED
 52114100 COT W-FAB CLO YRN,MF W>200GSQ
 52114200 W-FAB COT DENM,MX MFW>200G/SQM
 52114300 WOV FAB 3-4THR MX-MFW>200G/SQM
 52114900 OTH W-FB COT CLO YRN MMF>200G
 52115100 COT WOV FAB,MF,W>200G/SQM PRN
 52115200 WOV FAB 3-4THRD MMF-W>200GPRNT
 52115900 OTH W-FAB COT,MF,W>200G/SQM P
 52121300 OTH COT W-FAB DYED W 200G/SQM
 52121400 OTH W-FAB,COLOR YRN W 200G/SQ
 52121500 OTH W-FAB COT PRNTD W 200G/SQ
 52122300 OTH COT WOV FAB DYED>200G/SQM
 52122400 OTH W-FAB COT COLYARN>200G/SQ
 52122500 OTH W-FAB COT PRINTED>200G/SQ

54074200 OTH FAB 85% OR MORE DYED
 54074300 OTH W.FAB NYL FLAMT WT>85% DY
 54074400 OTH W.FAB FILA DIF COL NYL>85
 54075200 OTH W.FAB TEXTUR POLY DYED 85
 54075300 OTH W.FAB DIF COL TEXTUR POLY
 54075400 OTH FAB TEXT POLY FIL PRINTED
 54077200 OTH WOV FAB SYNTH FIL DYED 85
 54077300 OTH W.FAB DIF COL SYN FILA PR
 54077400 OTH WOV FAB SYNTH FIL PRINTED
 54078200 OTH WOV FAB MIXED COTTON DYE
 54078300 OTH FAB SYN TEXMAT COLOR DYED
 54078400 OTH FAB SYN TEX SQM MATERUAK
 54079200 OTH WOV FAB SYN F/L NS DYED
 54079300 OTH WOV FAB SYN F/L NES COLOU
 54079400 OTH WOV FAB SYN FIL NES PRINT
 54082200 OTH WOV FAB ART. FIL DYED
 54082300 OTH WOV FAB DIFFERENT COLOUR
 54082400 OTH WOV FAB ART. FIL PRINTED
 54083200 OTH WOV FAB ART. FIL YARN DYE
 54083400 OTH WOV FAB ART.FIL YARN PRIN
 55132100 W-FAB SYN STA FIB MX COT DYED
 55132200 POLY WOV STAP FIB,3-4 THR-DYE
 55132300 POLYS,COT,STAP FIB<170G DYED
 55132900 OTH FAB SYN STAP FINRE DYED
 55133100 WOV FAB SYN STAP FIB COLOUR YR
 55133200 W. FAB SYN STA FIB<85%MX-COTT
 55133300 O/W-FAB SYN STA FIB<85%COL YR
 55133900 OTH WOV FAB STAP FIB<170G/SQM
 55134100 WOV FAB POLY STAP FIB PRINTED
 55134200 W.FAB POLY STAP FIB 3-4THR PR
 55134300 O/W-FAB POL STAP FIBRE PRINTE
 55134900 O/W-FAB SYN STAP FIB MIX COTO
 55142100 W-F POLY STAP FIB<85% DYED
 55142200 W-F POLY STAP FIB 3/4THRD DYE
 55142300 OTH FAB POLY FIB MIX COT DYED
 55142900 OTH FAB<85% MIX COT SYN FIB
 55143100 W-F POLY FIB<85% MIX COT COLO
 55143300 O/W-F POL STAP FIB<85% MIXED
 55143900 O/W-FAB SYN STAP FIB MIX COT
 55144100 W-F SYN FIB<85% MIX COT PRINT
 55144200 W-F POL FIB MIX COT 3-4T PRIN
 55144300 O/W-FAB POL FIB MIX COT PRINT
 55144900 O/W-FAB SYN MIX COT>170G PRIN
 55161200 W-FAB ARTI >85% BY WEIGH,DEYED
 55161400 W-FAB ARTI FIB>85% WT PRINTED
 55162200 W-FAB ART FIB<85% WT MM-F DYED
 55162400 W-FAB ART FIB<85%WT MM-F PRIN
 55163200 W-FAB ART FIB<85%WT,WOL/HAI D
 55163300 W-FAB ART FIB<85% WT,D-COL,WOL
 55164200 W-FAB ART FIB<85%WT MX COT DYE

55164400 W-FAB ART FIB<85% WT MIC PRINT
 55169200 W-FAB ART FIB<85%WT MIX O/F D
 55169300 W-FAB ART FIB<85%WT D-COL,O/FI
 55169400 W-FAB ART FIB<85%WT O/FIB PTI
 59031000 TEX.FAB.IMP,COV/LMTD PICAL.
 59032000 TEX.FAB IMP,COATED,POLYURETHA
 59039000 OTH,TEX FAB IMP,LAM, PLASTIC.
 60052200 WRAP KNIT FAB OF COTTON DYED
 60052300 WRAP KNIT FAB OF DIFFCLUR YRN
 60052400 WRAP KNIT FAB PRINTED
 60053200 WRAP KNIT FAB SYN.FIBRE DYED
 60053300 WRAP KNIT FAB SYN.FIB DIF COLO
 60053400 WRAP KNIT FAB SYN.FIB PRINTED
 60054200 WRAP KNIT FAB ART FIB DYED
 60054400 WRAP KNIT FAB PRINTED
 60062200 OTH KNIT/CRO FAB COTTON DYED
 60062300 OTH KNIT/CRO FAB COTON COLOR
 60062400 OTH KNIT/CRO FAB COTON PRINTE
 60063200 OTH KNIT/CRO FAB SYN.FIB DYED
 60063300 OTH KNIT/CRO FAB SYN.FIB COLO
 60063400 OTH KNIT/CRO FAB SYN.FIB PRIN
 60064200 OTH KNIT/CRO FAB ART FIB DYED
 60064400 OTH KNIT/CRO FAB ART FIB PRIN
 63012000 BLANKET/TRAVEL RUGS OF WOOL/H
 63013000 BLANKET/TRAVEL RUGS OF COTTON
 63014000 BLANKET/TRAVEL RUGS OF SYN FI
 63019000 BLANKET/TRAVEL RUGS OF TEX MA
 63021010 BED SHEETS,KNITTED/CROCHETED
 63021020 PILLOW COVERS,KNITTED/CROCHET
 63021090 OTH BED LINEN,KNITTED/CROCH
 63022100 OTH BED LINEN,PRINTED,N/KNIT
 63022200 OTH BED LINEN,PRINTED M/MADE
 63022900 OTH BED LINEN,PRINTED MILL-MA
 63023110 BED SHEETS OF COTTON MILL-MAD
 63023130 BED COVERS OF COTTON MILL-MAD
 63023150 PILLOW-COVERS COTTON MILL-MAD
 63023190 OTH BED LINEN OF COTTON
 63023200 OTH BED LINEN OF MAN-MADE FIB
 63023910 BED SHEETS OTH TEX MAT HANDLO
 63023920 BED COVERS OTH TEX MAT MILLMA
 63023930 BED COVERS OTH TEX MAT HANDLO
 63023990 BED LINEN OTH TEX MAT NOT/KNI
 63024000 TABLE LINEN KNITTED/CROCHETED
 63025190 OTH TABLE LINEN OF COTTON
 63025900 TABLE LINEN OF OTH TEX MATERI
 63026010 TOWELS OF COTTON MILL-MADE
 63026090 OTH TABLE LINEN
 63029900 TOILET/KITCHEN LINEN TEX MAT
 63031100 CURTAINS/BLINDS/VALANCE OF CO
 63031200 CURTAINS/BLINDS/VALANCE SYNFI

63031900 CURTAINS/BLINDS/VALANCE TEXMA
63039110 CURTAINS OF COTTON MILL-MADE
63039190 OTHER CURTAINS OF COTTON
63039210 CURTAINS OF SYN FIB MILL-MADE
63039290 OTHER CURTAINS OF SYNT FIBRES
63039900 OTH CURTAINS/VALANCE OF TEXMA
63041100 BED-SPREADS KNITTED/CROCHETED
63041900 BED-SPREADS, OTHERS
63049110 CUSHIONS
63049190 OTH FURNISHING ARTICLES KNITE
63049200 OTH FURNISHING ARTICLE COT KN
63049300 OTH FURNISHING ARTICLE SYN FI
63049900 OTH FURNISHING ARTICLES TEXMA
63071010 DISH-CLOTH
63071020 WASH-CLOTH
63071040 BAR MOPS
63071050 BATH MATS
63079090 OTHER MADE UP ARTICLES

RESEARCH, DEVELOPMENT & ADVISORY CELL

Ministry of Textile Industry has established a Research, Development and Advisory Cell (RDA CELL) to devise policy guidelines for the government to facilitate the growth and development of Textiles and Clothing sector.

RDA CELL has a mandate to study and analyze existing textile policy and align it for the future drive of the industry. It establishes benchmarks for textile policies of regional and intra-regional textile players of the world. The Cell analyzes trade performance of different sub-sectors and thereby devise policies to encourage investment in future growing textile businesses. The Cell further formulate frameworks to enhance the human resource, technology and infrastructure of the textile industry of Pakistan. RDA CELL publishes weekly, monthly, quarterly and yearly reports on various issues relating to trade and industry.

RDA CELL OFFICERS

Nasim Qureshi

Director General

Phone: +92 51 925917

Fax: +92 51 9257321

Email: dg@rdacell.com

Arsalan Ghani

Director Technology, Productivity and Skill Development

Contact for issues relating to Machines, Technology management, Operations, Skill developments, Trainings, etc.

Phone: +92 51 9235618

Fax: +92 51 9257321

Email: director.technology@rdacell.com

Kanwar M. Usman

Director Research & Development

Contact for Issues relating to Branding, Marketing, International compliance etc.

Phone: +92 51 9235619

Fax: +92 51 9257321

Email: director.rd@rdacell.com

Syed Abbas Mehdi

Manager Financial

Analysis

Contact for issues relating trade, government regulations, financials, taxations, duties etc.

Phone: +92 51 9235621

Fax: +92 51 9257321

Contact manager.fa@rdacell.com

Adil Majeed

Manager Information

Technology

Contact for Issues relating to information, electronic resources, Web technologies, B2B Portals etc.

Phone: +92 51 9235654

Fax: +92 51 9257321

Email: manager.it@rdacell.com

Website:

<http://www.rdacell.com>

For Further information:

info@rdacell.com

For Feedbacks:

feedback@rdacell.com